

A stylized, light green graphic of a tree with a curved trunk and a few rounded branches, positioned on the left side of the page.

**Pacific Forest and Watershed  
Lands Stewardship Council**

**California Public  
Utilities Commission**

Biannual Report

January 12, 2012



# Stewardship Council Mission

- To protect and enhance PG&E's watershed lands and uses
- To invest in efforts to improve the lives of young Californians through connections with the outdoors



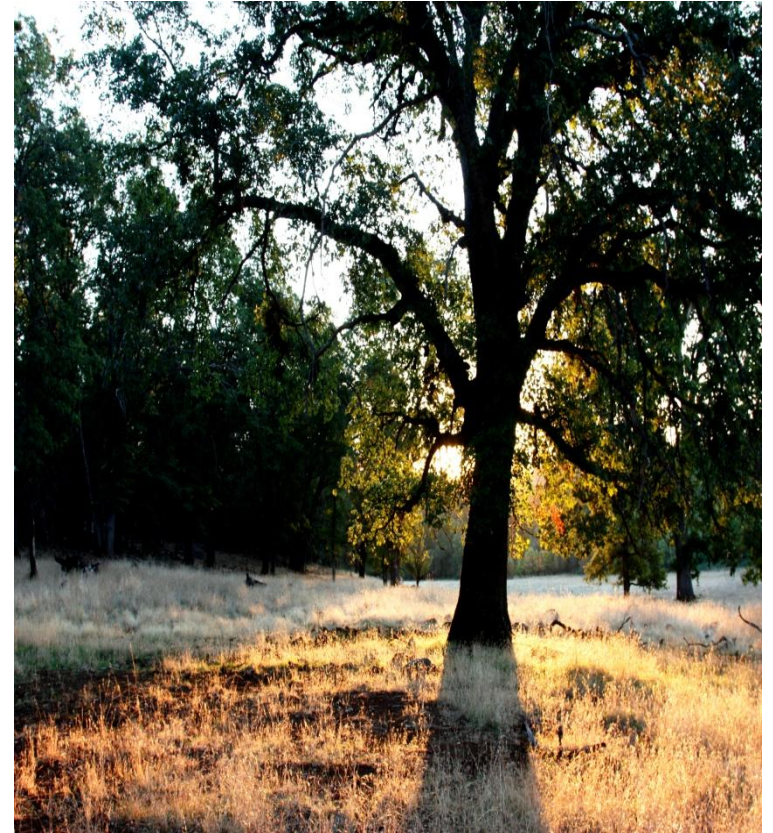


# PG&E's Land Conservation Commitment

- As part of the PG&E Settlement Agreement and Stipulation in 2003, a Land Conservation Commitment was established to permanently protect PG&E watershed lands



# PG&E Watershed Lands





# Land Conservation Commitment

- Conservation easements will be placed on PG&E's lands to protect or enhance six Beneficial Public Values





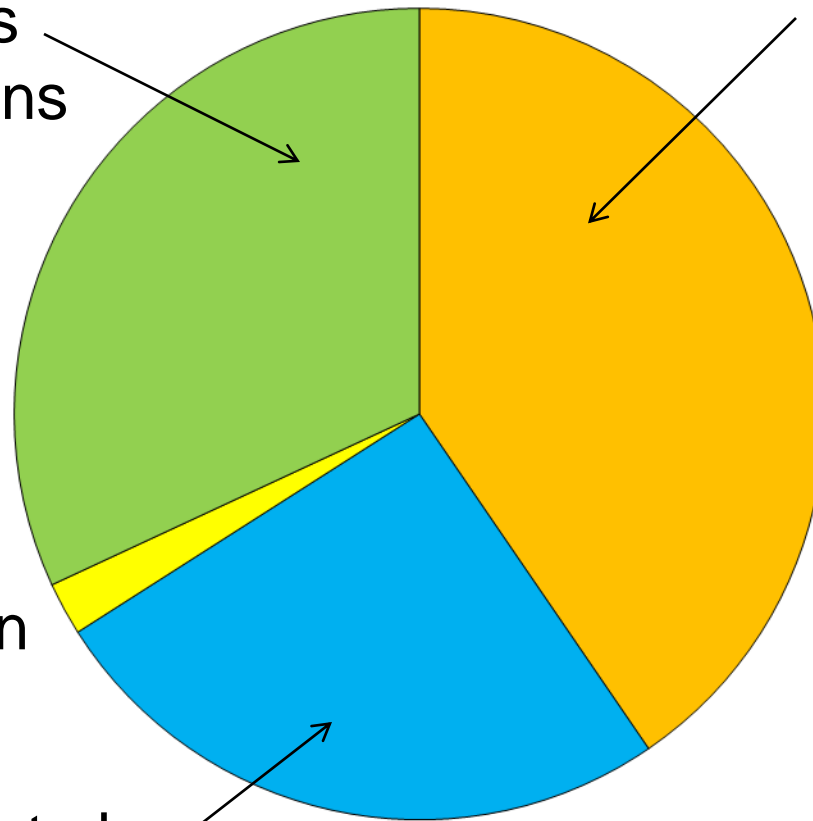
# PG&E's Land Conservation Commitment

- Approximately 70,000 acres available for donation to non-profit conservation organizations and public entities, including recognized Native American tribes
- PG&E to retain lands needed for hydro operations

# Council's Fee Title Donee Recommendations

14 planning units  
Recommendations  
yet to be made

20 planning units  
with fee title  
donation  
recommendations



Carrizo Plain

12 planning units to be  
retained by PG&E



# Land Conservation Program Next Steps

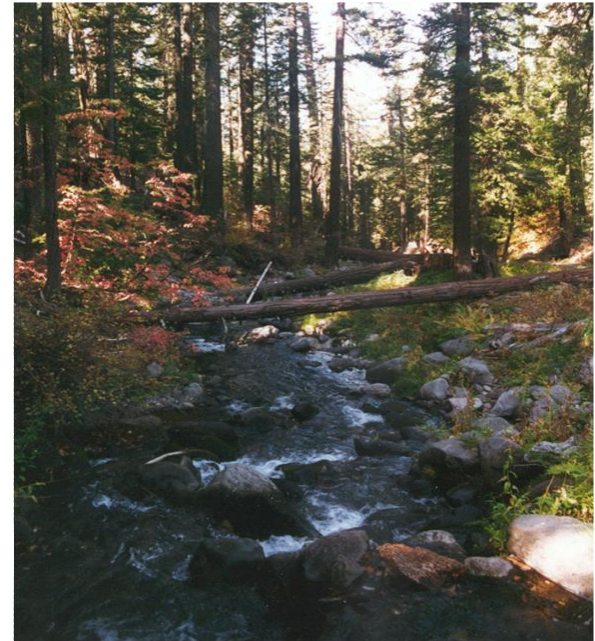
- Council will adopt first set of Land Conservation and Conveyance Plans in 2012
- PG&E will file first Section 851 filings in Fall 2012
- Completion of first set of transactions in 2013



## Council Actions to Expand Research and Demonstration Forests

- To expand state research and demonstration forests, the Stewardship Council has recommended the donation of:
  - 10,339 acres to CALFIRE
  - 4,584 acres to the University of California, Center for Forestry

# Forested Lands in the Sierra Cascade Region



## Need for Research and Demonstration Forests

- Global climate changes pose unprecedented threats to California, Sierra and Cascade region
- Need for further research and demonstration on natural and managed forest ecosystems to increase understanding of forest response to natural and human disturbance and environmental change over broad spatial and temporal scales

# Benefits of New Research and Demonstration Forests

- Permanent sites for interdisciplinary scientific research extending over long periods of time
- Areas of focus: carbon sequestration, climate change, silviculture, ecology, fire science, etc.

# CPUC Field Trip – October 2011

- Commissioner visits PG&E Watershed Lands in Shasta County





# Youth Investment Program



# Youth Investment Program

- Connecting underserved California youth to the outdoors
  - Park investments
  - Support for outdoor programs





# 2011 Grantmaking Update

| Fund           | # Requests | Total Requests      | # of Awards | Award              | Youth         |
|----------------|------------|---------------------|-------------|--------------------|---------------|
| Program        | 183        | \$9,104,751         | 35          | \$656,500          | 6,681         |
| Infrastructure | 58         | \$9,268,686         | 5           | \$811,000          | 9,899         |
| Initiatives    | N/A        | N/A                 | 2           | \$650,000          | --            |
| <b>Totals:</b> | <b>241</b> | <b>\$18,373,437</b> | <b>42</b>   | <b>\$2,117,500</b> | <b>16,580</b> |



# Youth Investment Program 2006-2011

- Over 160 organizations awarded grants
- Over \$12 million in funds awarded
- Over 260,000 youth served



# Strategic Initiatives

- Cultural Relevancy in Outdoor Programs
- Outdoor Educators Institute
- Native American Youth - Best Practices





# Joint Petition to Modify Decision 03-12-035

- Stewardship Council and Greenlining Institute have filed a Joint Petition to Modify D. 03-12-035
- Purpose is to clarify permissible uses of Settlement funds:
  - Permanent program to benefit youth, particularly underserved youth
  - Limited to PG&E Service Area



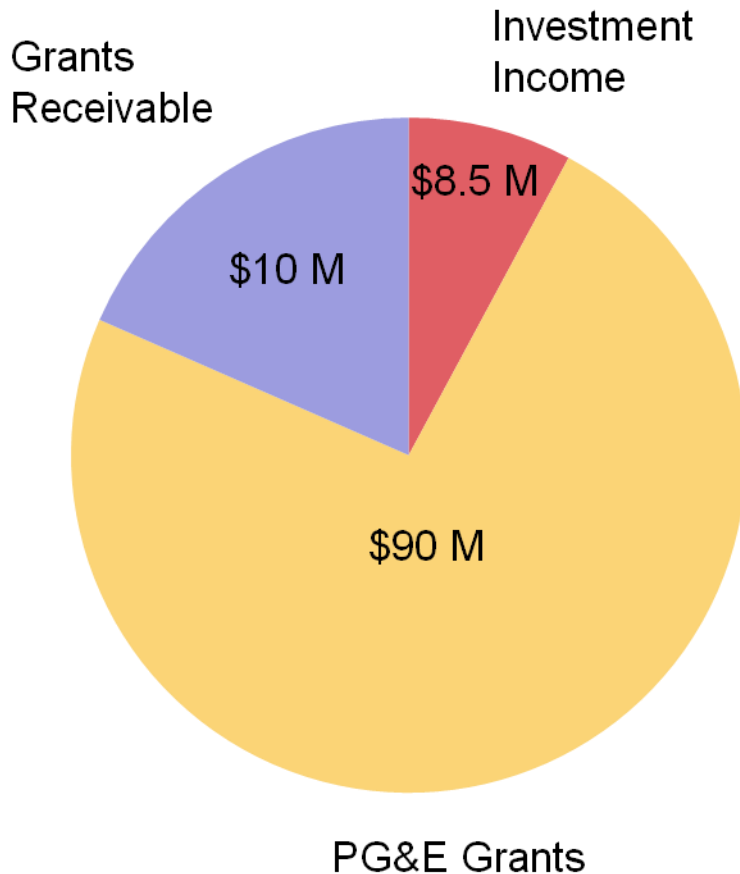
# PG&E's Funding Commitment

- \$30 million for youth investment program
- \$70 million for land conservation program
- Paid annually in 10 installments
- Last installment due in 2013

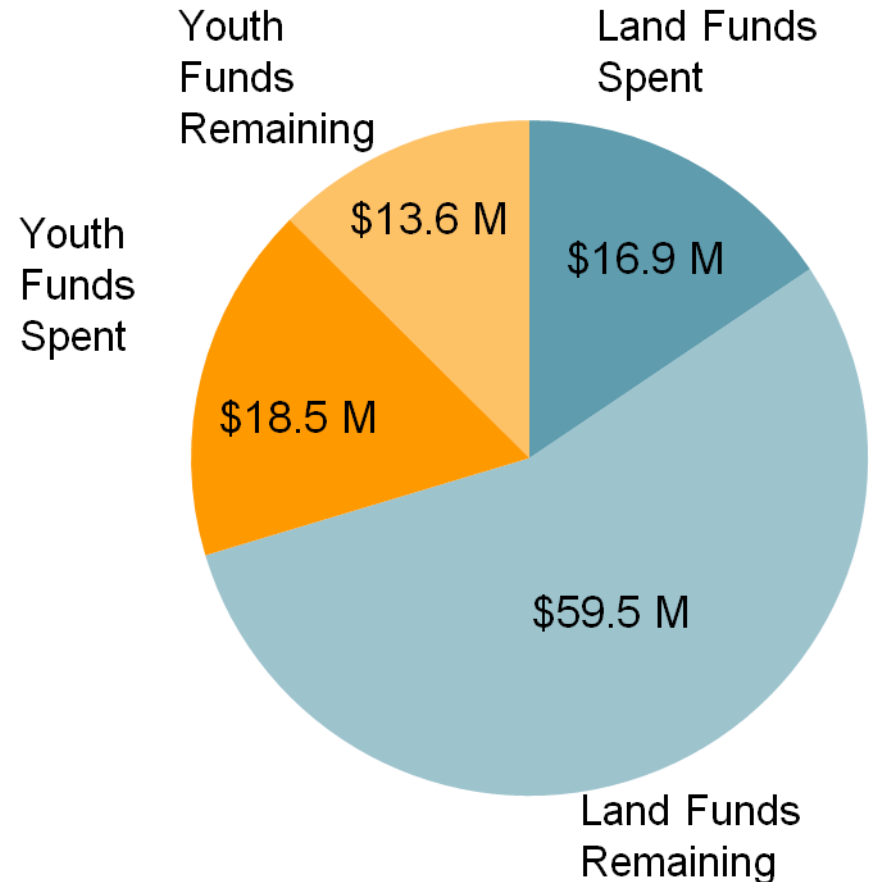


# Funding Snapshot: \$100 Million Award

## Source of Funds



## Use of Funds



# Budget Update

