

FEE TITLE DONEE RECOMMENDATION HAT CREEK PLANNING UNIT

EXECUTIVE SUMMARY

The Stewardship Council was created to oversee PG&E's Land Conservation Commitment, as set forth in the Settlement and Stipulation,¹ to protect over 140,000 acres of land and to preserve and enhance, on an overall basis, the following six beneficial public values (BPVs): protection of the natural habitat of fish, wildlife, and plants; preservation of open space; outdoor recreation by the general public; sustainable forestry; agricultural uses; and, historic values. The Stewardship Council is responsible for developing a land conservation plan and recommending qualified organizations to become involved in the future stewardship of these lands.

The Hat Creek Planning Unit, located in Shasta County, consists of 26 parcels encompassing approximately 3,176 acres of land, of which approximately 2,706 acres have been identified as available for fee title donation (see attached map). The Stewardship Council received and evaluated land stewardship proposals (LSPs) from two organizations interested in receiving a donation of fee title to lands located in this planning unit. Staff has developed the following recommendation, which was endorsed by the Watershed Planning Committee (Planning Committee):

Bureau of Land Management (Alturas Field Office) (BLM) as the prospective recipient of fee title to approximately 2,265 acres available for donation and not constrained within 15 parcels (Parcels 185, 186, 187, 188, 189, 190, 191, 192, 202, 203, 204, 205, 206, 207, and 209), subject to compliance with all of the requirements of the Land Conservation Commitment.

If this recommendation is adopted by the Stewardship Council Board (Board), Stewardship Council staff would work with the prospective donee on the development of a management and funding agreement. This agreement would be developed in coordination with the development of a Land Conservation and Conveyance Plan (LCCP). The proposed management and funding agreement and proposed LCCP would then be presented to the Planning Committee and Board for consideration and approval at a future date.

I. INTRODUCTION AND BACKGROUND

a. Planning Unit Description

The Hat Creek Planning Unit consists of approximately 3,176 acres of land currently owned by PG&E and is located in Shasta County in and around the town of Cassel (see attached map). The

¹ California Public Utilities Commission Decision 03-12-035, December 18, 2003 (the "Settlement") and the Stipulation Resolving Issues Regarding the Land Conservation Commitment dated September 25, 2003 (the "Stipulation").

planning unit is comprised of 26 legal parcels along Hat Creek and includes several bodies of water including Cassel Pond, Hat Creek #1 Forebay, Baum Lake, Crystal Lake, Hat Creek, and Hat Creek #1 Canal. At an elevation of approximately 3,200 feet, the Hat Creek Planning Unit is an important recreation area with extensive historic and habitat resources. The planning unit, inclusive of lands being recommended for the BLM, is generally bordered on the east by BLM lands, along with a few private parcels. The Lake Britton and Fall River Mills Planning Units border the Hat Creek Planning Unit to the north with private lands to the south. Private lands and lands owned by the BLM, and the USFS border the planning unit to the west.

There is substantial diverse riparian habitat within the Hat Creek Planning Unit. The habitat resources are used by a variety of waterfowl, raptors, and aquatic species including great blue heron, osprey, bald eagle, bank swallow, Shasta crayfish, hardhead, bigeye marbled sculpin, and rough sculpin. A portion of the planning unit is designated as a Wild Trout stream by the California Department of Fish and Game due to its abundant wild rainbow and brown trout fisheries.

This planning unit also provides open space for Shasta County and the town of Cassel. The Shasta County General Plan recognizes that rivers, creeks and associated riparian corridors, and floodplains within the county are major open space resources.

Recreation use at Hat Creek is primarily associated with fishing and duck hunting although camping, hiking, and wildlife watching also occurs throughout the planning unit. Boating (non-motorized, electric trolling motor boats only) primarily occurs at Baum Lake as boating is prohibited at many other areas in the planning unit. The Pacific Crest Trail runs through the planning unit, primarily along the western shore of Baum Lake. Many of the recreation sites in the planning unit have been recently enhanced to accommodate high use during the recreation season.

The planning unit has minor forestry resources and there has been only one timber sale for this area in the last 20 years. The area has scattered second-growth Jeffrey and Ponderosa Pine stands with no plantations or late seral stage stands. The PG&E Timber Management Unit (TMU) for Hat Creek consists of 644 acres of timber, and current PG&E management activities are restricted to mitigating for watershed and forest health issues, including emergency salvage harvesting following insect attack or a catastrophic event.

Grazing was eliminated in 2001 due to impacts to cultural resources, as well as erosive impacts to the shoreline of Baum and Crystal Lakes and the east side of Hat Creek.

The planning unit is within the Pit River Tribe's ancestral territory. There are several recorded historic and prehistoric archaeological sites within the planning unit (all within the FERC boundary). The planning unit contains the only legal Native American spearfish site in California and other important places to Native Americans, including prayer sites and a large meadow where members of the Illmawi band of the Pit River Tribe are said to have taken refuge from nearby Mt. Lassen eruptions.

The Hat Creek Planning Unit report, which describes the BPVs and management objectives associated with the planning unit has been excerpted from Volume II of the Land Conservation Plan (LCP) and is attached.

b. Donee Evaluation Process

The Stewardship Council received statements of qualifications (SOQs) from seven organizations interested in acquiring fee title to lands available for donation within this planning unit. A list of organizations that submitted SOQs is attached. Of the four organizations that were invited forward (the BLM, Pit River Tribe, Shasta County, and the USFS) the following two organizations submitted LSPs:

- BLM (Alturas Field Office)
- Pit River Tribe

In evaluating the LSPs, the following factors were considered:

- An evaluation of the potential donees' programmatic, financial, and legal capacity to maintain the property interest so as to preserve and/or enhance the beneficial public values of the planning unit;
- Anticipated funding needs of the potential donees;
- The management objectives for the Hat Creek Planning Unit as set forth in Volume II of the Land Conservation Plan;
- Public comments received regarding the desired qualifications of potential donees and the future stewardship of the planning unit;
- The requirements of the Settlement and Stipulation; and,
- Other relevant policies, procedures, and goals adopted by the Stewardship Council.

II. EVALUATION

The BLM is being recommended to receive the donation of fee title to approximately 2,265 acres of land located in 15 parcels within the Hat Creek Planning Unit, subject to compliance with all of the requirements of the Land Conservation Commitment. This recommendation is based on a determination that the BLM appears to have sufficient financial and organizational capacity to hold and maintain the fee title interests, as identified, on these lands.

a. Donee Organizational Capacity

The BLM appears to possess the organizational capacity and experience to own and manage fee title to the properties recommended for donation as summarized below.

- The BLM manages over 267 million acres of public lands. The mission of the BLM is to sustain the health, diversity, and productivity of the public lands for the use and enjoyment of present and future generations. The Alturas Field Office manages

approximately 503,000 acres of public land in Modoc, Shasta, Lassen, and Siskiyou counties. The Alturas Field Office manages lands that are adjacent to several parcels available for donation.

- A variety of policies and mandates direct the Alturas Field Office to manage public lands for multiple uses and benefits and for the sustained yield of renewable resources. The Alturas Resource Management Plan (2008) provides management direction for the public lands within the Hat Creek watershed. The plan presents management direction for a variety of resources including, but not limited to: water resources, soil resources, vegetative communities, fish and wildlife, wildland fire ecology and management, cultural resources, and visual resources. The BLM also works with various entities to manage the natural and cultural resources in the Pit-McCloud River watershed.

b. Donee Financial Capacity

The Stewardship Council's review of potential fee title donees' financial capacity consisted of an evaluation of each organization's annual operating budget and financial statements, and consideration of the current and projected management and enhancement costs and funding in relation to the organization's financial capacity. Based on this review, staff concluded that the BLM would have the financial ability to manage the lands being recommended for donation to preserve and/or enhance the BPVs associated with these lands.

c. Management Objectives

Volume II of the LCP established certain management objectives for the Hat Creek Planning Unit (see Volume II Planning Unit Report with attachments). The BLM seeks fee title to lands within the Hat Creek Planning Unit to achieve a number of proposed management activities which are described below and appear to be consistent with the established management objectives.

The BLM is seeking fee title to 2,265 acres of land available for donation that wholly or partially encompass 15 parcels. Acquisition of these parcels by the BLM would result in consistent management of the natural and cultural resources found within these parcels and surrounding BLM land. A majority of the lands being recommended for transfer are adjacent to existing BLM lands. The BLM proposes to manage donated lands consistent with the 2008 Alturas Resource Management Plan. Specific management activities identified in the BLM's proposal include:

- Conduct biological and cultural resource surveys to inform management, including an inventory and treatment of noxious weeds.
- Patrol the area regularly to ensure public safety and protection of resources.
- Work with the California Department of Fish and Game to develop appropriate signage for the Hat Creek Wild Trout Area and current fishing regulations.

- Enhance public facilities by adding a parking area, restroom, and trash receptacles.
- Close unauthorized Off Highway Vehicle trails and redirect use to a new BLM Off Highway Vehicle area that is located ten miles from the Hat Creek Planning Unit.

d. Funding

Consistent with the Stewardship Council's Land Conservation Funding Policy, the Stewardship Council may elect to fund certain costs related to the transfer of fee title and/or costs of enhancements to the beneficial public values on watershed lands. The Stewardship Council Board adopted property tax neutrality guidelines at its March 30, 2011 meeting stating that the Stewardship Council would pay 100% of property tax neutrality costs when lands are transferred to federal agencies. Any costs to be funded by the Stewardship Council would be identified in a management and funding agreement to be developed by the Stewardship Council in coordination with the prospective donee.

e. Requirements of the Settlement and Stipulation

The Stewardship Council's recommendation that the BLM receive fee title to certain lands available for donation within this planning unit is subject to compliance with all the requirements of the Land Conservation Commitment and is contingent upon a determination that conveyance of these parcels would not result in an expansion of FERC license conditioning authority under Section 4(e) of the FPA, in compliance with Stipulation Section 12(b)(4). Several of these requirements are highlighted below.

The conservation easement would include an express reservation of rights for continued operation and maintenance of hydroelectric facilities and associated water delivery facilities, including project replacements and improvements required to meet existing and future water delivery requirements for power generation and consumptive water use by existing users, and compliance with any FERC license, FERC license renewal, or other regulatory requirements on lands to be retained by PG&E. On lands to be conveyed to the BLM, the grant deed will reserve to PG&E similar rights for operation and maintenance of hydroelectric facilities and associated water delivery facilities.

The Stewardship Council would work with PG&E and Shasta County to ensure the land conveyance of these parcels achieves property tax neutrality.

f. Conservation Partners

The permanent protection of the Hat Creek Planning Unit, and the future preservation and enhancement of the BPVs, may involve, and benefit from, the participation of land conservation partners. For the purposes of this recommendation, land conservation partners are defined as organizations other than the prospective fee title donee or conservation easement holder that become involved in future activities on the donated lands and that contribute to the preservation

and enhancement of the BPVs. Land conservation partners may be identified in the LSPs submitted by organizations interested in a fee title donation, or during or after the development of the LCCP. Such organizations and activities may be eligible for Stewardship Council funding, depending on the type of organization, proposed activities, availability of funds, and other factors. Staff would work with the prospective organizations recommended for donation of fee title and conservation easements in this planning unit and evaluate opportunities for land conservation partners. The results of this effort would be reflected in the management and funding agreement and LCCP.

No formal land conservation partners were identified in the LSP submitted by the BLM for the Hat Creek Planning Unit.

III. PUBLIC COMMENTS

The Stewardship Council has implemented a public outreach program to engage stakeholders and solicit public input on the development and implementation of the land conservation plan. A summary of key public outreach activities and public comments associated with the Hat Creek Planning Unit is attached. Additional public comments received concerning this recommendation will be presented to the Board for consideration.

IV. NEXT STEPS

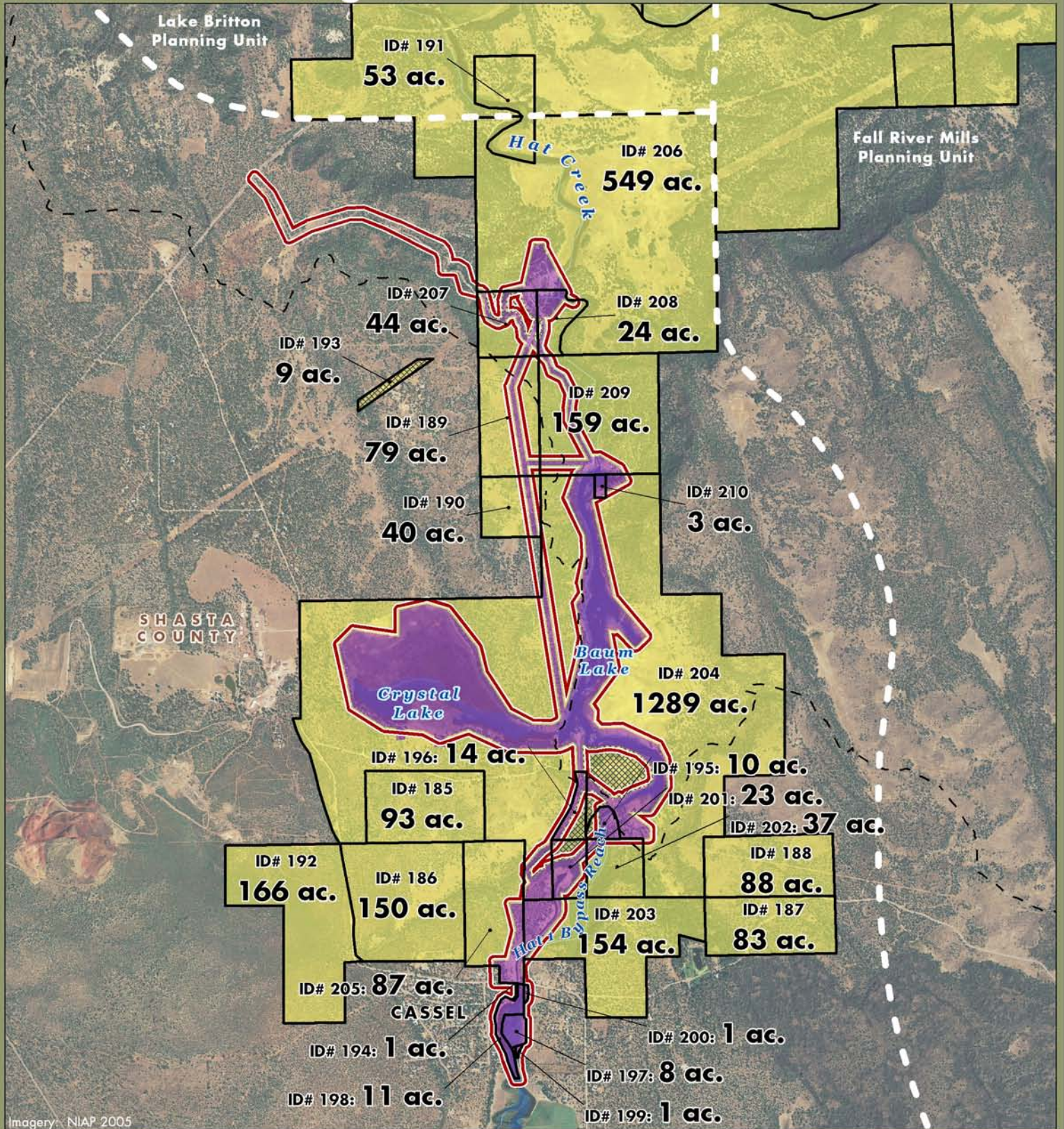
If this recommendation is adopted by the Stewardship Council Board, staff would invite the BLM to negotiate specific terms of the transaction with PG&E and would work with the BLM to develop a management and funding agreement. The development of a management and funding agreement would be coordinated with the development of a LCCP.

Adoption of the LCCP by the Board would be the final step in the Stewardship Council's process for selecting donees. The proposed LCCP would be made available for public review and comment before it is approved by the Board.






ATTACHMENTS AND REFERENCE MATERIAL

- Hat Creek Planning Unit Map
- LCP Volume II Planning Unit Report for Hat Creek Planning Unit
- List of Registered Organizations That Submitted SOQs for Lands Available in the Hat Creek Planning Unit
- Summary of Key Public Outreach Activities and Public Comments Associated with the Hat Creek Planning Unit

Pit-McCloud River Watershed
Hat Creek Planning Unit



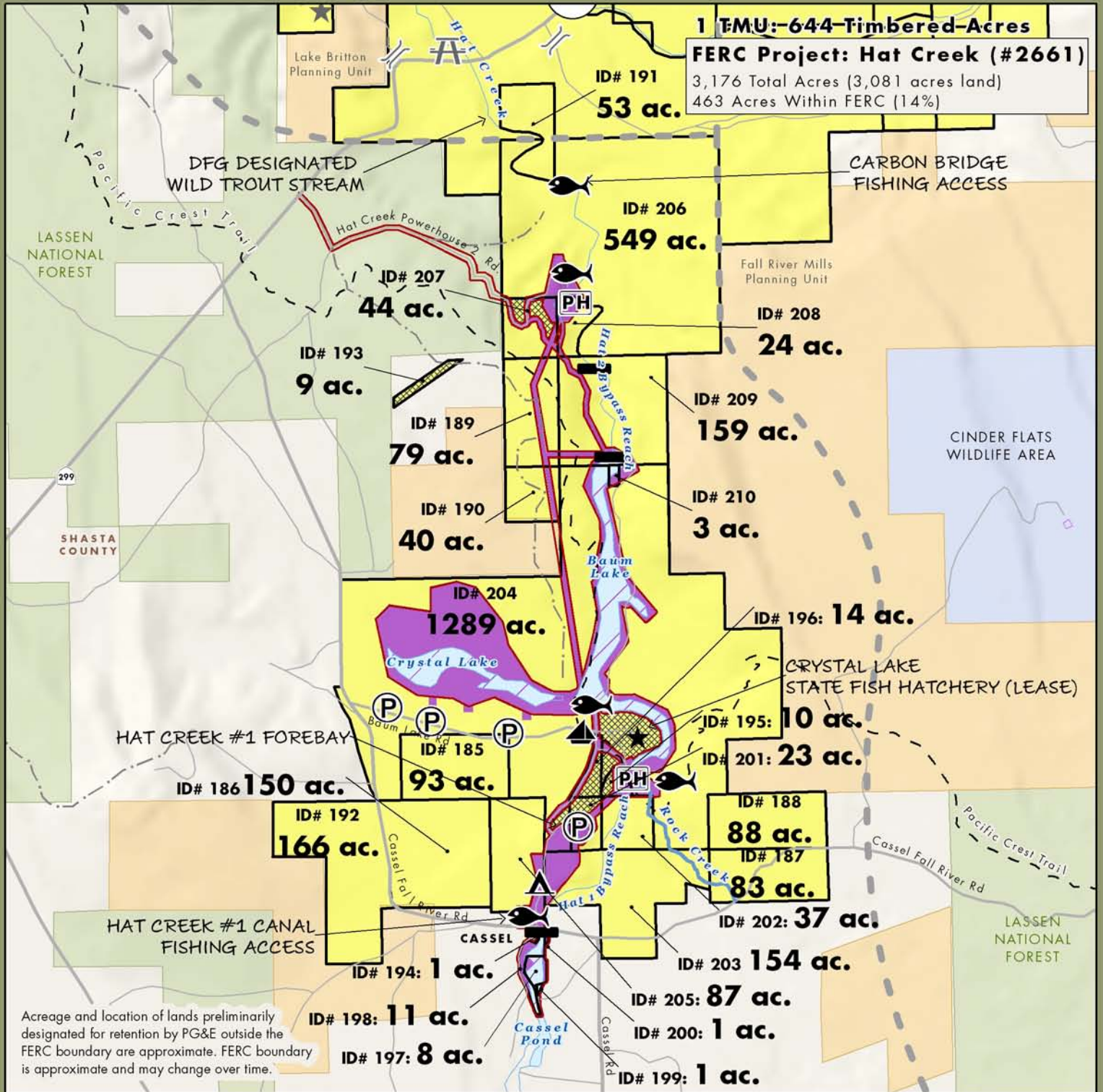
Imagery: NIAP 2005

 PG&E Lands Preliminarily Designated for Donation	 FERC Boundary	Acreage and location of lands preliminarily designated for retention by PG&E outside the FERC boundary are approximate. FERC boundary is approximate and may change over time.
 Certain Conditions May Make Donation Inadvisable	 Legal Parcel Boundary and Id Number	
 PG&E Lands Preliminarily Designated for Retention		

0 0.5 1 Miles

EDAW | AECOM
 October, 2009

Pit-McCloud River Watershed Hat Creek Planning Unit



1 TMU:-644-Timbered-Acres
FERC Project: Hat Creek (#2661)
 3,176 Total Acres (3,081 acres land)
 463 Acres Within FERC (14%)

Acreage and location of lands preliminarily designated for retention by PG&E outside the FERC boundary are approximate. FERC boundary is approximate and may change over time.

PG&E Lands Preliminarily Designated for Donation	FERC Boundary	BLM	Boat Launch	Fishing
Certain Conditions May Make Donation Inadvisable	Trail	Private	Campground	Parking
PG&E Lands Preliminarily Designated for Retention		State	Dam	Powerhouse
Legal Parcel Boundary and Id Number		USFS	Feature of Importance	
PG&E Lands Under Water				

0 0.5 1 Miles

EDAW | AECOM
October, 2009

HAT CREEK PLANNING UNIT

Pit-McCloud River Watershed

Existing Conditions & Uses

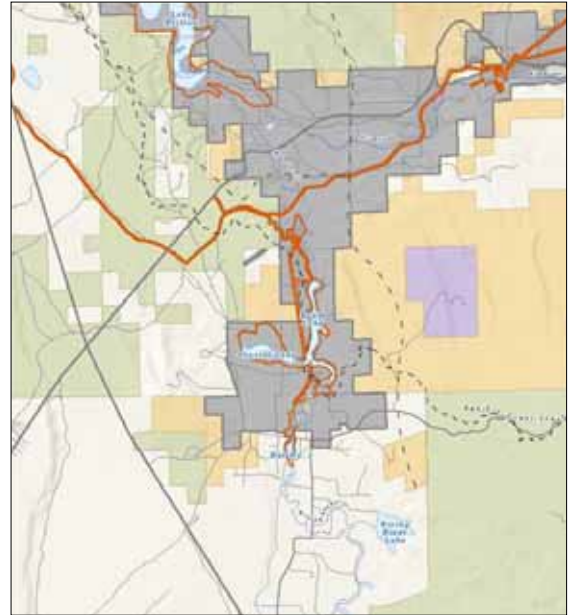
Overview

- Two small lakes and Hat Creek corridor that contain valuable biological and recreational resources
- 3,208 acres in Shasta County; 2,745 acres outside the FERC boundary and 463 acres inside the FERC boundary
- Comprises the Hat Creek Project (FERC #2661), New License issued November 2002

As shown in Figure PM-7, the Hat Creek Planning Unit is located in Shasta County in and around the town of Cassel. The planning unit includes several waterbodies including Cassel Pond, Hat Creek #1 Forebay, Baum Lake, Crystal Lake, Hat Creek, and Hat Creek #1 Canal. The planning unit contains lands that are part of the Hat Creek FERC Project (#2661) as well as hydropower infrastructure such as the Hat Creek #1 and 2 Powerhouses and associated penstocks, dams, canals, flumes, and intakes. The planning unit is primarily surrounded by BLM and private land, as well as USFS land in the northwest corner of the planning unit. In addition, the DFG leases land for the Crystal Lake State Fish Hatchery.



Crystal Lake



Hat Creek Planning Unit
Shasta County

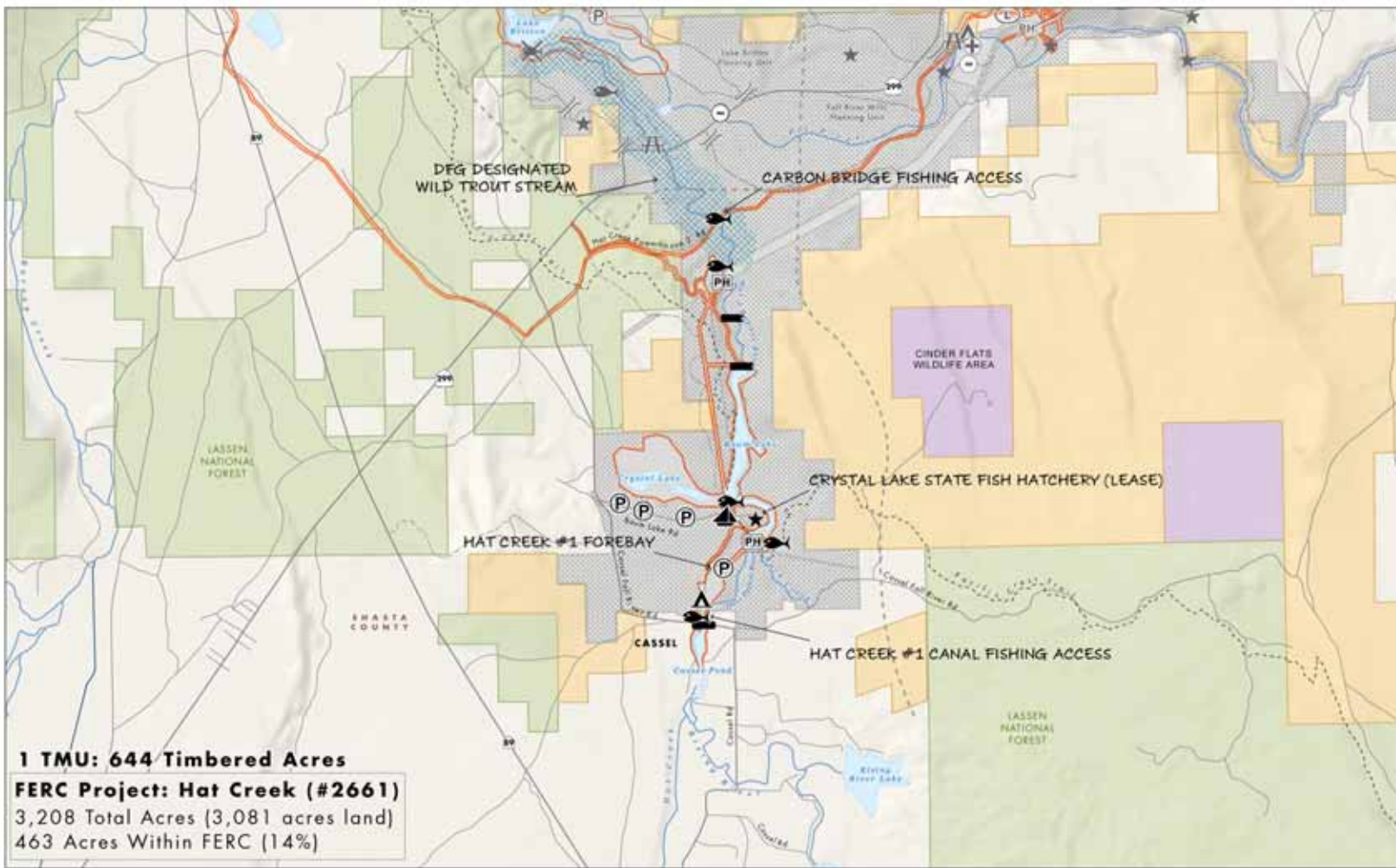
Fish, Plant, and Wildlife Habitat

There is substantial diverse riparian habitat within the Hat Creek Planning Unit. The habitat resources are used by a variety of waterfowl, raptors, and aquatic species including great blue heron, osprey, bald eagle, bank swallow, Shasta crayfish, hardhead, bigeye marbled sculpin, and rough sculpin. Waterfowl and other birds use the fresh water emergent wetland habitat and waterbodies for nesting, wintering, and staging. Bald eagles nest near Hat Creek and forage throughout the planning unit. The adjacent nesting territory is one of the most productive bald eagle nesting territories in the State and has been chosen to contribute nestlings for the San Francisco Zoo captive breeding program and Catalina Island reintroduction project in four different years.

Wild trout are abundant in Hat Creek and Crystal Lake. The portion of Hat Creek from Hat Creek #2 Powerhouse (north of Baum Lake) downstream to the fish barrier dam (located in the Lake Britton Planning Unit) is a DFG-designated Wild Trout stream known for its excellent wild rainbow and brown trout fisheries. The New License for the Hat Creek Project provided several biological resource enhancements and management plans.¹

Hat Creek Planning Unit

Existing Conditions



- PG&E Lands Preliminarily Designated for Retention
- PG&E Lands Preliminarily Designated for Disposition
- BIA
- DOD
- State
- BLM
- NPS
- USFS
- BOR
- Other/NGO
- Federal Wilderness

- Boat Launch
 - Campground
 - Dam
 - Day Use
 - Feature of Importance
 - Fishing
 - Fish Barrier Dam
 - Gate
 - Lodging
 - Non-Motorized Boating
 - Parking
 - Powerhouse
 - Private Camp
 - Ranch
 - Trailhead
 - Whitewater Put-In/Take-Out
- All symbols may not appear on the map

- FERC Boundary
- Stream / River
- Canal / Ditch
- Pipeline
- Highly Valued Stream
- Primary Roads
- Secondary Roads
- OHV Roads
- Trail



Figure PM-7

HAT CREEK PLANNING UNIT

Pit-McCloud River Watershed

Open Space

The Hat Creek Planning Unit contains open space throughout the planning unit as development is limited to a few scattered recreation facilities. The Shasta County General Plan recognizes that rivers, creeks and associated riparian corridors, and floodplains within the county are major open space resources. This planning unit also provides open space for the town of Cassel and contains viewshed for the Cassel Fall River Road, a primary local thoroughfare.

Outdoor Recreation

Recreation use at Hat Creek is primarily associated with fishing and hunting, though camping, hiking, and wildlife watching also occur in the planning unit. Fishing, in particular, is popular throughout the planning unit. Hunting, mostly for ducks, occurs around Crystal Lake. The Cassel Campground includes ADA-compliant campsites and is very popular, receiving substantial use during the recreation season. Boating (non-motorized, electric trolling motor boats only) primarily occurs at Baum Lake as boating is prohibited at many other areas in the planning unit.²

The Pacific Crest Trail runs through the planning unit, primarily along the west shore of Baum Lake. Due to the outstanding habitat, there are ample opportunities for wildlife viewing throughout the planning unit, particularly at Baum and Crystal Lakes. Many of the recreation sites have been recently enhanced, and a Recreation Management Plan (Shasta crayfish) and Public Access Management Plan were developed according to the New License Order.

Forest Resources

The planning unit has minor forestry resources and there has been only one timber sale for this area in the last 20 years. The area has scattered second-growth Jeffrey and ponderosa pine stands with no plantations or late seral stage stands. The

PG&E Timber Management Unit (TMU) for Hat Creek consists of 644 acres of timber, and current PG&E management activities are restricted to mitigating for watershed and forest health issues, including emergency salvage harvesting following insect attack or a catastrophic event. Salvage harvesting operations were last conducted in the early 1990s to remove dead and dying trees, the result of a large disease outbreak. Hazard trees are also occasionally removed from recreation areas.

Agricultural Uses

In the 1800s the site was a dairy farm and since then sustained heavy grazing use under two grazing leases that nearly encompassed the entire planning unit. Grazing was eliminated in 2001 due to impacts to cultural resources, as well as erosive impacts to the shoreline of Baum and Crystal Lakes, and the east side of Hat Creek downstream of Hat Creek #2 Powerhouse.

Historic Resources

The Hat Creek Planning Unit is within the Pit River Tribe's ancestral territory. There are 15 recorded archaeological sites within the Hat Creek Project cultural resource study area (all lands within the FERC boundary). These sites include midden areas, housepit depressions, lithic scatters, milling stations, historic Baum Powerhouse, historic Camp 1 remains and



American white pelican on Baum Lake

HAT CREEK PLANNING UNIT

Pit-McCloud River Watershed



Kayaking on Baum Lake

caretaker's house, an historic can scatter, and historic rock alignments/post piles and artifacts. One ethnographic site is located within the planning unit – an important salmon fishing area (the only legal Native American spearfish site in California). In addition, there are other important places to Native Americans including prayer sites and a large meadow where members of the Illmawi band of the Pit River Tribe are said to have taken refuge from nearby Mt. Lassen eruptions.

All components of the Hat Creek Hydroelectric Project were found to be eligible on the NRHP as an historic district. PG&E has taken efforts to manage cultural sites as prescribed by the Hat Creek Cultural Resources Management Plan (CRMP) by eliminating grazing use, capping areas, bouldering roads, and providing parking areas to prevent damage to sites from vehicle or pedestrian use.

Stewardship Council Recommendations

The Stewardship Council recommends that the land and land uses at Hat Creek be preserved and enhanced by focusing on biological and cultural resource values as well as popular recreation resources. In presenting the Recommended Concept provided here, our objective is to preserve and enhance cultural and important plant and wildlife resources, as well as enhance

educational opportunities and sustainable forestry management.

Objective: Preserve and enhance biological and cultural resources while enhancing educational opportunities, the recreation experience, and sustainable forestry management.

As shown on Table PM-4, The Stewardship Council has identified a number of preservation and/or enhancement measures that may contribute to the conservation management program for the Hat Creek Planning Unit. Additional detail and background regarding these potential measures can be found in the Supporting Analysis for Recommendations, provided under separate cover. These measures are intended to be illustrative in nature, not prescriptive, and will be amended, deleted, or augmented over time in coordination with future land owners and managers to best meet the objective for this planning unit.

Fish, Plant, and Wildlife Habitat

Objective: Preserve and enhance habitat in order to protect special biological resources.

The Hat Creek Planning Unit offers a variety of habitats for both native terrestrial and aquatic



Hat Creek near Carbon Bridge Fishing Access

HAT CREEK PLANNING UNIT

Pit-McCloud River Watershed

species, including many special status species. In order to preserve and enhance the habitat and resources found here, the Stewardship Council recommends that baseline studies and plans be developed to gain a clear understanding of the resources at Hat Creek. These studies will likely be followed by management plans to ensure implementation of preservation and enhancement measures for specific resources. Management of the property to preserve and enhance habitat will also include addressing noxious weeds, damage from muskrats, and restoration of hydrologic function in two creeks.

The Stewardship Council also recommends improving bald eagle nesting and perching habitat, supporting Shasta Crayfish restoration efforts, and reducing habitat fragmentation through OHV road restoration and removal of unnecessary fencing. The Stewardship Council encourages close coordination with the Shasta Crayfish Technical Review Committee and other resource-focused organizations working in the region. All planning should be considered in conjunction with fuels and forest management plans as well as relevant FERC license required plans.

Open Space

Objective: Preserve open space in order to protect natural and cultural resources, viewsheds, and the recreation setting.

This concept would preserve open space values by limiting development to minor recreation enhancements, as well as through permanent conservation easements. Conservation easements would describe all prohibited uses to maintain open space values, including the level of uses allowed. This concept includes habitat restoration with little development and is therefore not expected to decrease the scenic quality of the viewsheds.



Fishing in Cassel Pond

Outdoor Recreation

Objective: Enhance recreational facilities in order to provide additional educational opportunities and enhance the recreation experience.

The Hat Creek Planning Unit provides many recreation opportunities and receives year-round recreation use. As shown in Figure PM-8, the Stewardship Council looks to enhance these opportunities by providing interpretive signage to educate visitors on the valuable natural resources within the planning unit. We recommend enhancements focus on interpretive signage along the Pacific Crest Trail, improvements to fishing-related signage, increased opportunities for youth education and recreation, and providing minimal additional day use facilities.



Emergent wetland habitat near Crystal Lake

HAT CREEK PLANNING UNIT

Pit-McCloud River Watershed

Sustainable Forestry

Objective: Develop and implement forestry practices in order to contribute to a sustainable forest, preserve and enhance habitat, as well as to ensure appropriate fuel load and fire management.

The forestlands of the Hat Creek Planning Unit provide valuable habitat and are located adjacent to the community of Cassel. The Stewardship Council recommends that future care and management of the property include developing a long-term vision for forest management in the area, which addresses silvicultural practices, holistic watershed management, fuels management, and fire management and response. The fire management and response, fuels, and forest management plans should be developed in conjunction with the noxious weed and wildlife and habitat management plans. We expect that all of these plans would be developed in conjunction with adjacent landowners, DFG, BLM, and USFS management and practices as appropriate.

Preservation of Historic Values

Objective: Identify and manage cultural resources in order to ensure their protection.

Various prehistoric and historic cultural resources are known to be present within the



Annual grassland near Hat Creek

planning unit, and there is a high likelihood that additional cultural resources are present. The Stewardship Council aims to support an increased understanding of these resources and ensure they are appropriately protected. To meet this objective, we recommend that cultural resource studies be conducted to understand the resources found at Hat Creek (particularly outside the FERC cultural resource study area where less information is available) and that appropriate management plans be developed and implemented. Throughout this effort, the Stewardship Council recommends close coordination with Native American entities. Development of the cultural resources management plan should be consistent with the Hat Creek Project CRMP.

Endnotes

¹ New License Order habitat measures include flushing flows, gravel augmentation, fish monitoring, monitoring and protection of Shasta crayfish, bank swallow protection, and development of a Final Hat Creek Bald Eagle Nesting Territory Management Plan.

² In relicensing, the area was found to have low whitewater boating potential.



Hat Creek Planning Unit

Registered Organizations that Submitted Statements of Qualifications for Lands Available for Donation

County of Shasta
Fall River Resources Conservation District
Environmental Education Council of Marin
Pit River Tribe
Spring Rivers Foundation
US Forest Service - Lassen National Forest
US Bureau of Land Management

SUMMARY OF KEY PUBLIC OUTREACH ACTIVITIES AND PUBLIC COMMENTS ASSOCIATED WITH THE HAT CREEK PLANNING UNIT

PUBLIC REVIEW OF VOLUMES I AND II OF THE LCP

The Draft Land Conservation Plan (LCP) Volumes I and II were released in June 2007 for a 60-day public comment period. During this time, the Stewardship Council held ten public meetings to publicize the availability of the Draft LCP and to encourage public comment. During public review of Volumes I and II of the LCP, six comments were submitted concerning the Hat Creek Planning Unit. Comments were received via email, the Stewardship Council website, and hardcopy letters. The comments were reviewed and responded to individually, and the text in the Draft LCP was revised as appropriate.

Public comments emphasized the following regarding the future management of the property:

- Include adjacent tribal lands and members in any emergency action planning efforts.
- Conduct ethnographic surveys to identify and enhance habitat for traditional use plants.
- Acknowledge traditional uses of the area by Astuge and Illmawi bands of the Pit River Tribe.

PUBLIC INFORMATION MEETING FOR THE HAT CREEK PLANNING UNIT

A public information meeting for the Fall River Mills, Fall River Valley, Hat Creek, and Lake Britton planning units was hosted by the Stewardship Council on October 29, 2009 at the Veterans of Foreign Wars Hall in Burney, California. A total of 33 people attended and participated in the meeting, representing a wide variety of interests, including local and federal governments, community organizations, and community members. The primary purpose of this meeting was to solicit public input on the development of the Land Conservation and Conveyance Plans (LCCP) to preserve and enhance the Fall River Mills, Fall River Valley, Hat Creek, and Lake Britton planning units.

During the meeting, participants were invited to provide comments at the four planning unit stations, focusing on two topics: the potential priority measures proposed for the above listed planning units, and important qualifications of future land owners and conservation easement holders. A summary of the public comments concerning the Hat Creek Planning Unit is provided below.

General Comments/Potential Priority Measures to Preserve and Enhance the BPVs

- Enhance recreation for multiple-uses, not just fishing
- Enhance trail access to the river
- Ensure trails are safe for non-vehicle users
- Employ rules of conduct to protect private property owners
- Keep southernmost parcels pristine
- Open space is critical to preserving the integrity of the area

Important Qualifications of Future Landowners and Conservation Easement Holders

- Local organization
- Tribal for cultural preservation

ADDITIONAL CORRESPONDENCE SUBMITTED

The Stewardship Council also received other public comments and letters from individuals and organizations regarding the future management of the Hat Creek Planning Unit, as summarized below:

- Prohibit OHV use due to potential impacts on wildlife habitat and soils.
- Remove noxious weeds and preserve wetland areas.
- Enhance management of cultural resources and designate area as an archaeological district due to the significance and density of cultural resources located on the property.
- Assess and develop educational opportunities for the public and youth to learn about the Pit River Indian culture, such as signage, a cultural resource center, and model villages.
- Concern that increased public access will impact sensitive riparian habitat.
- Support for the lands available for donation to be transferred to the Pit River Tribe.