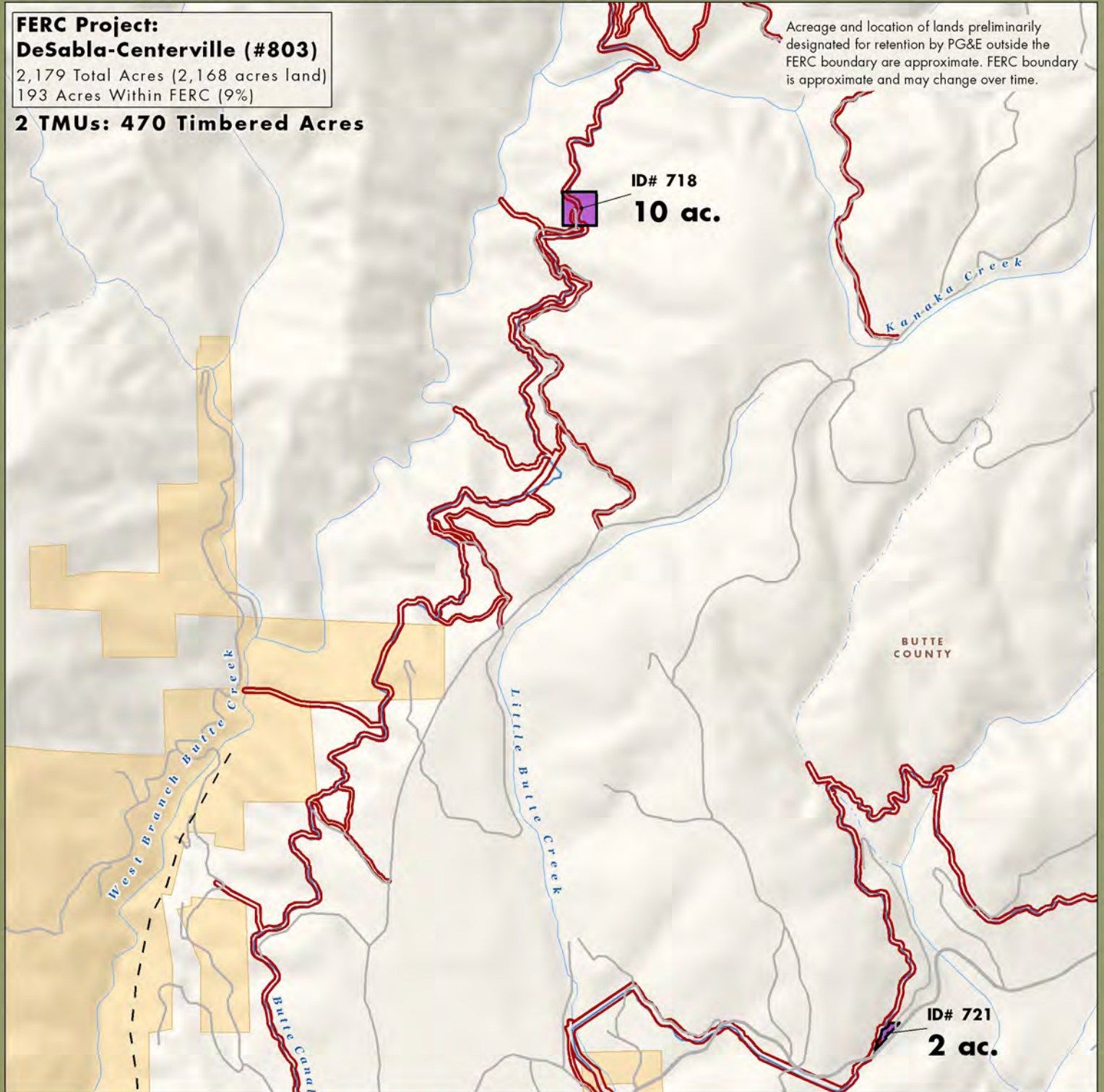


# Butte Creek Planning Unit: Map 1

**FERC Project:  
DeSabra-Centerville (#803)**  
2,179 Total Acres (2,168 acres land)  
193 Acres Within FERC (9%)

**2 TMUs: 470 Timbered Acres**

Acreage and location of lands preliminarily designated for retention by PG&E outside the FERC boundary are approximate. FERC boundary is approximate and may change over time.

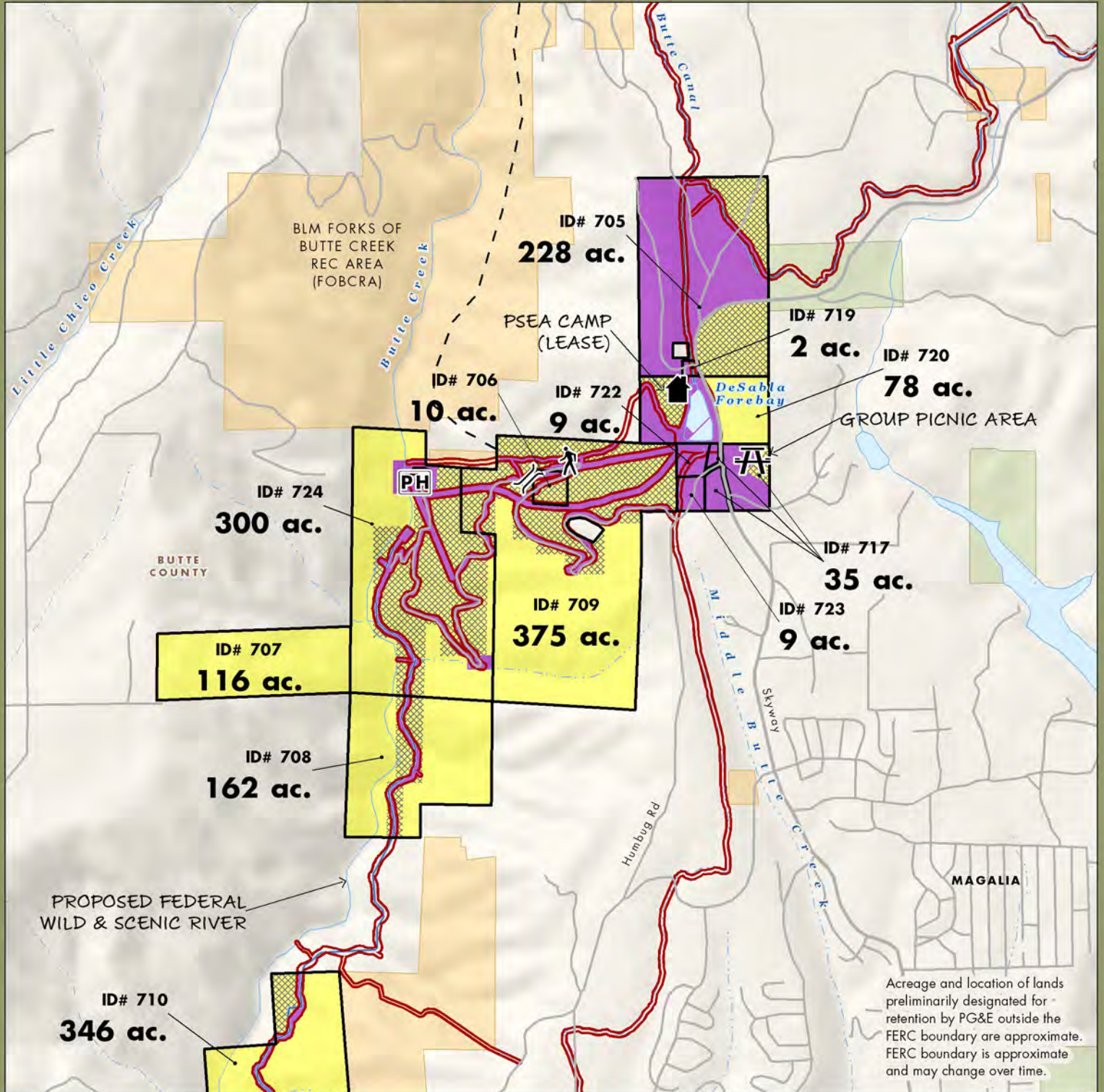


PG&E Lands Preliminarily Designated for Donation	BLM	Gate	Private Camp
PG&E Lands Preliminarily Designated for Retention	Private	Powerhouse	Trailhead
Certain Considerations May Make Donation Inadvisable	USFS	Trail	
Legal Parcel Boundary and Id Number	FERC Boundary		
PG&E Lands Under Water			

0 0.5 1 Mile

January 2011  
**AECOM**

# Butte Creek Planning Unit: Map 2



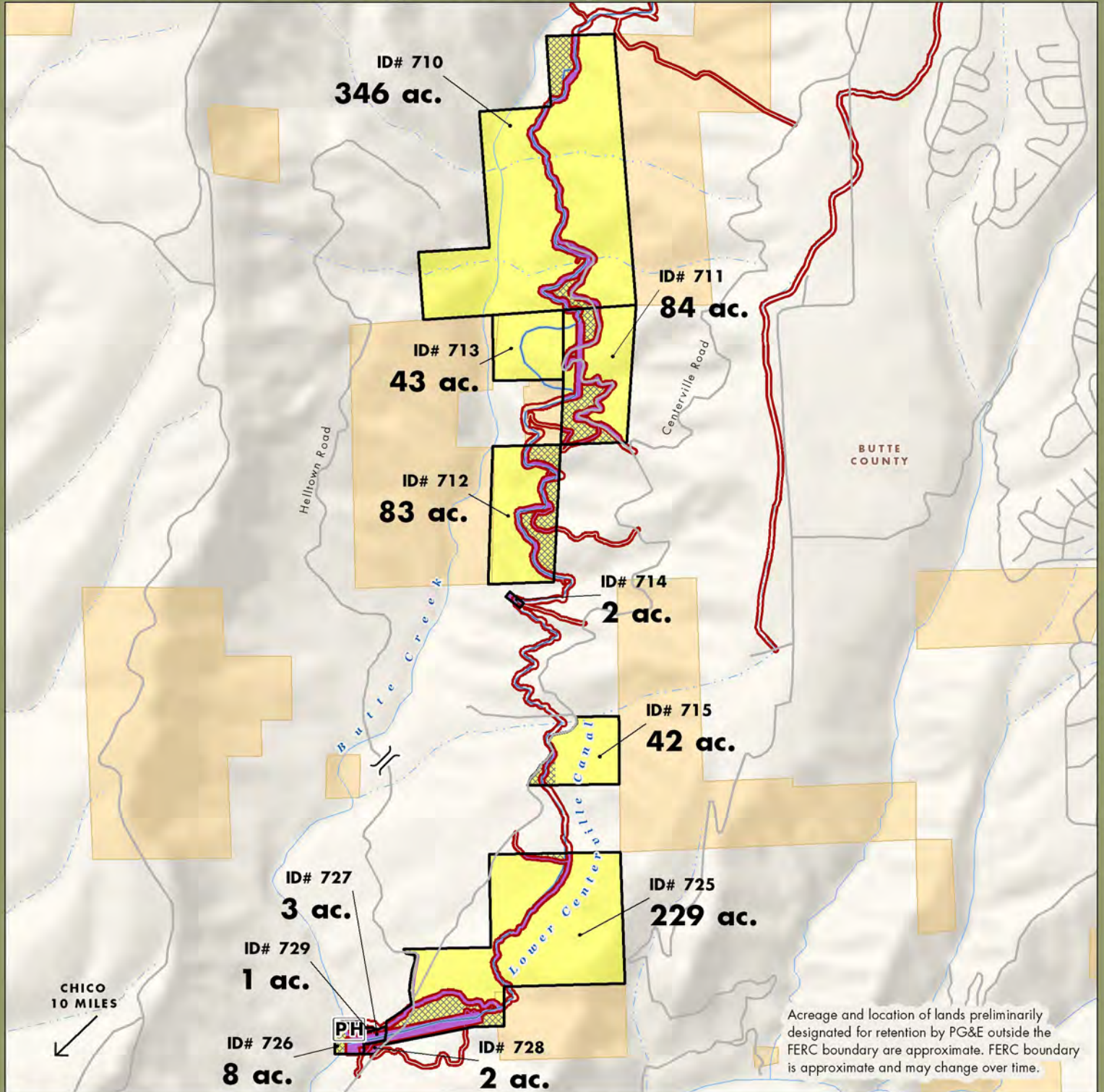
Acreage and location of lands preliminarily designated for retention by PG&E outside the FERC boundary are approximate. FERC boundary is approximate and may change over time.

PG&E Lands Preliminary Designated for Donation	BLM	Day Use	Private Camp
PG&E Lands Preliminary Designated for Retention	Private	Gate	Trailhead
Certain Considerations May Make Donation Inadvisable	USFS	Powerhouse	
Legal Parcel Boundary and Id Number	Trail	FERC Boundary	
PG&E Lands Under Water			

0 0.5 1 Mile

January 2011

# Butte Creek Planning Unit: Map 3



Acreage and location of lands preliminarily designated for retention by PG&E outside the FERC boundary are approximate. FERC boundary is approximate and may change over time.

PG&E Lands Preliminarily Designated for Donation	BLM	Day Use	Private Camp
PG&E Lands Preliminarily Designated for Retention	Private	Gate	Trailhead
Certain Considerations May Make Donation Inadvisable	USFS	Powerhouse	
Legal Parcel Boundary and Id Number	Trail	FERC Boundary	
PG&E Lands Under Water			

CHICO 10 MILES

0 0.5 1 Mile

January 2011

**AECOM**