

LOWER DRUM PLANNING UNIT

Yuba-Bear River Watershed

Existing Conditions & Uses

Overview

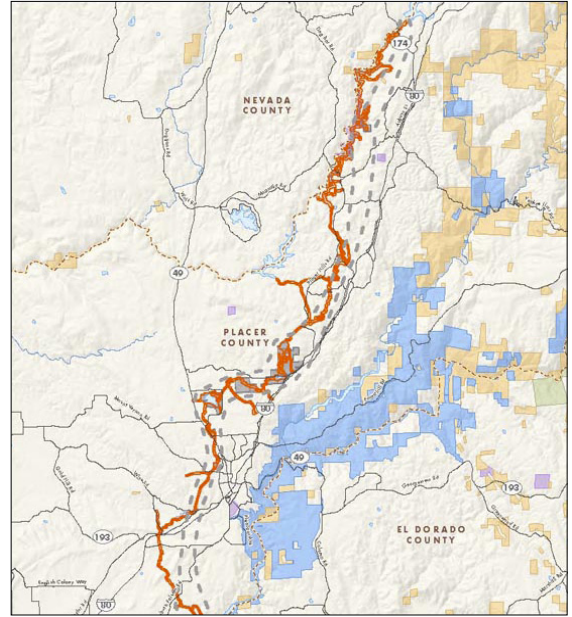
- Provides open space and recreation opportunities within the Sierra Nevada foothills
- 1,098 acres in Placer and Nevada Counties
- 789 acres outside the FERC boundary; 309 acres inside
- Part of the Drum-Spaulding Project (FERC #2310); License expires in 2013, relicensing expected to begin in 2007

As shown in Figure YB-9, the Lower Drum Planning Unit lies in close proximity to the City of Auburn, providing both recreation and open space opportunities in the Sierra Nevada foothills. The planning unit straddles an elevation range of 700 to 2,000 feet in this foothill region composed of small reservoirs, oak and pine woodlands, wetlands, and grasslands. The lands are located predominantly in Placer County with one small parcel found in Nevada County along Interstate 80. The planning unit is adjacent to a mixture of private, BLM, DFG, Bureau of Reclamation, and Placer County lands.

Several hydropower facilities and associated infrastructure are located in the Lower Drum



Wetland habitat by Rock Creek Reservoir



Lower Drum Planning Unit
Nevada & Placer Counties

Planning Unit. PG&E operates four powerhouses within this planning unit, and the Nevada Irrigation District owns and operates the Rollins Powerhouse.

Fish, Plant, and Wildlife Habitat

The Lower Drum Planning Unit offers a diversity of habitat for flora and fauna. The planning unit provides aquatic and emergent wetland habitat within its reservoirs, riparian habitat along the Bear River, and oak and pine woodlands and grassland within the upland areas. The planning unit provides suitable habitat for a variety of species, including many special status species such as California red-legged frog, foothill yellow-legged frog, northwestern pond turtle, oak titmouse, and numerous bat species. One special status species, the coast horned lizard, is likely to be found in the vicinity of the planning unit. Two special status plants, big-scale balsamroot and Brandegee's clarkia, have been documented within a one-mile buffer of the FERC boundary.

Open Space

Many of the parcels in this planning unit serve as open space buffers in areas of suburban



Lower Drum Planning Unit Existing Conditions

- PG&E Lands Preliminarily Designated for Retention
 - PG&E Lands Preliminarily Designated for Disposition
 - BIA
 - BLM
 - BOR
 - DOD
 - NPS
 - Other/NGO
 - State
 - USFS
 - Federal Wilderness
 - Boat Launch
 - Campground
 - Dam
 - Day Use
 - Feature of Importance
 - Fishing
 - Fish Barrier Dam
 - Gate
 - Lodging
 - Non-Motorized Boating
 - Parking
 - Powerhouse
 - Private Camp
 - Ranch
 - Trailhead
 - Whitewater Put-In/Take-Out
 - FERC Boundary
 - Stream / River
 - Canal / Ditch
 - Pipeline
 - Highly Valued Stream
 - Primary Roads
 - Secondary Roads
 - OHV Roads
 - Trail
- All symbols may not appear on the map

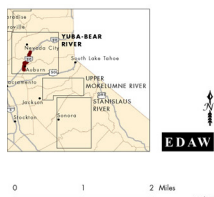
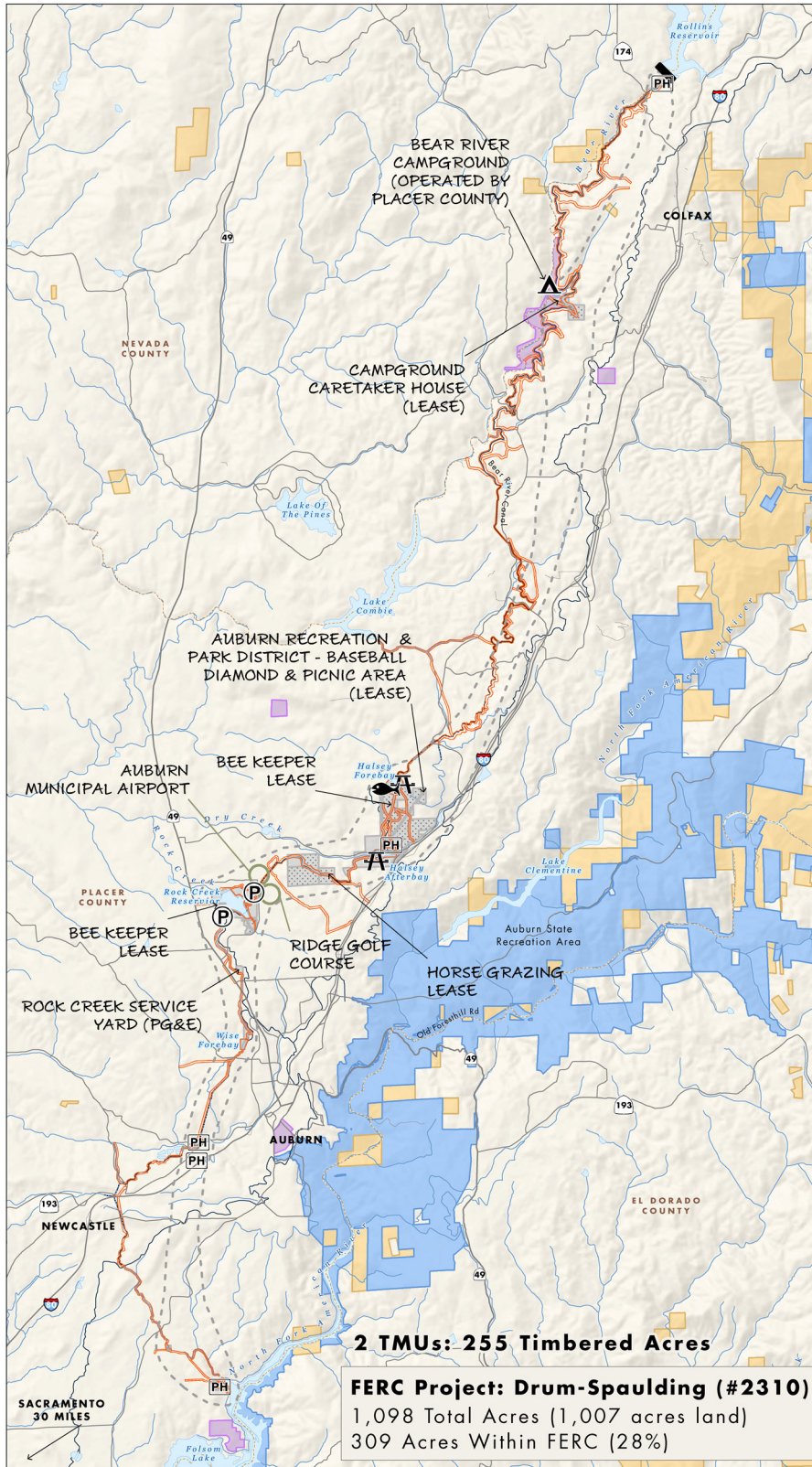


Figure YB-9

LOWER DRUM PLANNING UNIT

Yuba-Bear River Watershed

development. This is especially true for parcels near the City of Auburn which are surrounded by urban development such as the Auburn Municipal Airport, The Ridge Golf Course, light industry, and residential tracts.

Outdoor Recreation

Fishing and hiking are the primary recreational activities within the Lower Drum Planning Unit. The majority of the recreation facilities in the planning unit are focused at Halsey Forebay. This forebay is stocked with fish by DFG, making it a popular fishing spot for the surrounding community. Facilities at the forebay include a parking area, picnic tables, and a restroom.

Recreation opportunities in a natural environment also exist at Rock Creek Reservoir. Located in the gently rolling hills outside the City of Auburn, this area offers a rare mixture of recreation and open space within a developed landscape. This reservoir is edged by a mile of shoreline and is surrounded by wetlands and oak and pine woodland. Currently, the reservoir has few recreation enhancements – a gravel parking area and a single gravel trail along the southern shore. The reservoir serves as the drinking water supply for the City of Auburn and Placer County so boating and swimming are prohibited.

Additional reservoirs within the planning unit include the Halsey Afterbay and Wise Forebay. Both are lightly used and contain few recreation enhancements. To the north, parcels are located within the Bear River riparian corridor, and include a lease for a campground caretaker residence and a trail system from the Bear River Campground. The Auburn Area Recreation and Park District holds a lease for a baseball field and picnic area near Halsey Afterbay.

Forest Resources

Forest resources within the Lower Drum Planning Unit consist of 255 acres of low elevation pine and mixed hardwood forests within two Timber Management Units (TMUs). The TMUs are both

managed under a Salvage prescription, which allows emergency harvesting following an insect attack or a catastrophic event.

Agricultural Uses

There are three agricultural leases in this planning unit. One is a 5-acre horse grazing operation, located near Dry Creek and the Rock Ridge Golf Course; the other two are beekeeping operations. The majority of parcels are non-contiguous in nature, surrounded by suburban development, and are not well suited to agricultural activities.

Historic Resources

The Southern Maidu and Washoe once lived in the area around the Lower Drum Planning Unit; however, very little of this area has been inventoried for cultural resources. At this time four historic and/or prehistoric sites have been identified within the planning unit. The terrain lends itself to Native American and historic Euro-American settlement; potential existing for the presence of additional cultural resources within the planning unit.



Rock Creek Reservoir

LOWER DRUM PLANNING UNIT

Yuba-Bear River Watershed

Stewardship Council Recommendations

The Stewardship Council recommends that the land and land uses in the Lower Drum Planning Unit be preserved and enhanced by focusing on the importance of recreation at the site to the local community, as well as the need to provide ongoing protection to natural and cultural resources in the planning unit. In presenting the Recommended Concept provided here (see Figure YB-10), our objective is to preserve and enhance recreation and public access, and protect natural and cultural resources in this residentially developed area of the Sierra foothills.

Objective: Preserve and enhance biological and cultural resources, and enhance public access, recreation opportunities, and sustainable forestry management.

As shown in Table YB-5, the Stewardship Council has identified a number of preservation and/or enhancement measures that may contribute to the conservation management program for the Lower Drum Planning Unit. Additional detail and background regarding these potential measures can be found in the Supporting Analysis for Recommendations, provided under separate cover. These measures are intended to be illustrative in nature, not prescriptive and will be amended, deleted or augmented over time in coordination with future land owner and managers to best meet the objective for this planning unit.

Fish, Plant, and Wildlife Habitat

Objective: Preserve and enhance habitat in order to protect special biological resources.

The Lower Drum Planning Unit offers a diversity of terrestrial and aquatic habitats, which support many species, potentially

including several special status species. In order to preserve and enhance the habitat and resources found here, the Stewardship Council recommends that baseline studies and plans be developed to gain a clear understanding of the resources (particularly outside the relicensing study area where little information is currently available or will be provided by relicensing studies). These studies may be followed by specific management plans to ensure implementation of preservation and enhancement measures for specific resources if deemed necessary. Management of the property to preserve and enhance habitat will also include addressing noxious weeds and impacts of recreation on habitat values.

The Stewardship Council also recommends considering establishing a nature preserve at Rock Creek Reservoir. We recognize that the Lower Drum Planning Unit is an important resource in the regional setting and strongly encourage close coordination with local entities in implementing all biological resource protection measures and plans. The noxious weed management plan should be consistent with any future FERC license required plans as well as the fuels and forest management plans.

Open Space

Objective: Preserve open space in order to protect natural and cultural resources and the recreation setting.



Rock Creek Reservoir with wet meadows

LOWER DRUM PLANNING UNIT

Yuba-Bear River Watershed

This concept would preserve open space through permanent conservation easements. Conservation easements would describe all prohibited uses to maintain open space values, including the level of uses allowed and required to maintain open space qualities in this important area at the urban interface.

Outdoor Recreation

Objective: Enhance recreational facilities in order to provide additional public access, education, and recreation opportunities.

The Lower Drum Planning Unit is an important recreation resource for the residents of the larger Auburn area. The Stewardship Council looks to enhance recreation opportunities by recommending day use facilities and public access enhancements. The Stewardship Council recommends enhancements focused on potential new day use areas in three locations, interpretive signage to promote natural and cultural resource awareness, and potential trail connections. The Stewardship Council also recommends developing a recreation management plan for lands outside the FERC boundary, exploring potential public access sites at Rock Creek Reservoir, and enhancing public safety at the reservoir around canals and flumes. We recommend these enhancements be considered in close cooperation with PG&E as well as upcoming FERC relicensing efforts and related recreation planning.

Sustainable Forestry

Objective: Develop and implement forestry practices in order to contribute to a sustainable forest, preserve and enhance habitat, as well as to ensure appropriate fuel load and fire management.



Geese on Rock Creek Reservoir

The Lower Drum Planning Unit contains 255 timbered acres near the City of Auburn and other developments. The Stewardship Council recommends that future care and management of the Lower Drum Planning Unit include developing a long-term vision for forest management in the area, addressing silvicultural practices, holistic watershed management, fuels management, and fire management and response. The fire management and response, fuels and forest management plans should be consistent with future FERC license required plans, as well as the noxious weed management plan. We expect that all of these plans would be developed in coordination with adjacent landowner management and practices as appropriate.



Catching trout at Halsey Forebay

LOWER DRUM PLANNING UNIT

Yuba-Bear River Watershed

Agricultural Uses

Objective: Preserve and enhance grazing in order to support associated economic benefits, as well as to protect open space and habitat resources.

Currently, there are two beekeeping leases and one horse grazing lease within the planning unit. The Stewardship Council looks to preserve these uses as part of the long-term management of the Lower Drum Planning Unit. To support this effort, we anticipate a baseline conditions report will be required to describe current agricultural uses, physical, and overall biological conditions of the area, as well as the potential demand and feasibility of enhancing both beekeeping and horse grazing. From this type of assessment, specific determinations can be made to identify and manage these uses in balance with other uses and values of the property.

understanding of these resources and ensure they are appropriately protected. To meet this objective, we recommend that cultural resource studies be conducted to understand the resources found in the Lower Drum Planning Unit (particularly outside the relicensing study area where less information is available or will be provided by relicensing studies), that appropriate management plans be developed and implemented, and that opportunities to support public education regarding cultural resources be considered. Throughout all of these efforts, the Stewardship Council recommends close coordination with Native American entities, as well as PG&E and upcoming FERC relicensing efforts.

Preservation of Historic Values

Objective: Identify and manage cultural resources in order to ensure their protection, as well as to support opportunities for public education.

A few cultural resources are known to be present in the planning unit, and there is a high likelihood additional cultural resources are present. The Stewardship Council aims to support increased



Grasslands & wetlands at Rock Creek Reservoir

Table YB-5 Objectives to Preserve and/or Enhance – Recommended Concept

Planning Unit Objective: Preserve and enhance biological and cultural resources, and enhance public access, recreation opportunities, and sustainable forestry management.		
Beneficial Public Value	Objective	Potential Measures to Preserve and/or Enhance BPVs – Not Requirements*
Protection of the Natural Habitat of Fish, Wildlife, and Plants	Preserve and enhance habitat in order to protect special biological resources.	<ul style="list-style-type: none">• Evaluate potential impacts of formalizing additional recreation uses on habitat values, particularly in the Rock Creek Reservoir area.• Consider establishing a nature preserve at Rock Creek Reservoir.**• Develop a noxious weed management plan for the planning unit in coordination with Placer and Nevada Counties.• Conduct surveys outside the relicensing study area to identify biological resources and enable their protection.• Use biological resource survey data to determine if preparation of a wildlife and habitat management plan is appropriate.
Preservation of Open Space	Preserve open space in order to protect natural and cultural resources and the recreation setting.	<ul style="list-style-type: none">• Apply permanent conservation easements to ensure a higher level of open space protection.
Outdoor Recreation by the General Public	Enhance recreational facilities in order to provide additional public access, education, and recreation opportunities.	<ul style="list-style-type: none">• Develop a recreation management plan for lands outside the FERC boundary.• Install a day use area at Rock Creek Reservoir including a parking area, picnic benches, loop trail, restrooms, fishing platform, and shade structure.**• Install a day use area along New Airport Road including a parking area, picnic benches, loop trail, restrooms, and shade structure.**• Explore the feasibility of installing a day use area at Wise Forebay including a picnic bench and formalized trail.**• Explore potential public access points for Rock Creek Reservoir.**• Install interpretive signage regarding local history and natural resources.• Secure flumes and canals surrounding Rock Creek Reservoir and Wise Forebay for public safety.**• Explore the potential for a trail connecting Halsey Forebay and Afterbay.**
Sustainable Forestry	Develop and implement forestry practices in order to contribute to a sustainable forest, preserve and enhance habitat, as well as to ensure appropriate fuel load and fire management.	<ul style="list-style-type: none">• Evaluate existing timber inventory data and supplement as appropriate.• Develop a forest management plan for the planning unit to promote natural forest development and structural and physical diversity in forests for long-term ecological, economic, social, and cultural benefits.• Develop a fuels management plan to ensure long-term forest health and reduce fuel loading and fire hazard.• Develop a fire management and response plan in coordination with Placer and Nevada Counties.
Agricultural Uses	Preserve and enhance grazing in order to support associated economic benefits, as well as to protect open space and habitat resources.	<ul style="list-style-type: none">• Develop a baseline conditions report that describes current agricultural, physical, and overall biological conditions of the area, including current use and state of improvements.• Evaluate potential demand and feasibility of enhancing agricultural uses.
Preservation of Historic Values	Identify and manage cultural resources in order to ensure their protection, as well as to support opportunities for public education.	<ul style="list-style-type: none">• Protect cultural sites with landscape measures, signage, and restrict or formalize recreation use.• Conduct surveys outside the relicensing study areas to identify cultural resources and enable their protection.• Develop a cultural resources management plan for the planning unit.• Coordinate with Native American entities when conducting cultural resource measures.

* This is a set of recommended possibilities for the preservation and enhancement of BPV’s, and is not intended to be a set of requirements for future land management.

** Denotes site specific measure.

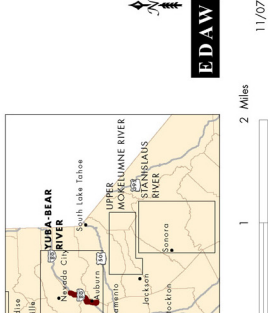


Figure YB-10
YB-44 LCP Volume II



All symbols may not appear on the map

**PRELIMINARY SET OF
RECOMMENDED POSSIBILITIES
-NOT REQUIREMENTS**



EDAW

1 2 Miles

11/07

Lower Drum Planning Unit Recommended Concept

POTENTIAL MEASURES:

- DEVELOP A BASELINE CONDITIONS REPORT THAT DESCRIBES CURRENT AGRICULTURAL, PHYSICAL, & OVERALL BIOLOGICAL CONDITIONS OF THE AREA, INCLUDING CURRENT USE & STATE OF IMPROVEMENTS
- EVALUATE TIMBER INVENTORY DATA & SUPPLEMENT AS APPROPRIATE
- DEVELOP A RECREATION MANAGEMENT PLAN FOR LANDS OUTSIDE THE FERC BOUNDARY
- EVALUATE POTENTIAL IMPACTS OF FORMALIZING ADDITIONAL RECREATION USES ON HABITAT VALUES, PARTICULARLY IN THE ROCK CREEK RESERVOIR AREA

- CONSIDER ESTABLISHING A NATURE PRESERVE & DAY USE AREA
- SECURE AREAS SURROUNDING FLUME & CANAL FOR PUBLIC SAFETY
- EXPLORE POTENTIAL PUBLIC ACCESS POINTS

EXPLORE FEASIBILITY OF
DEVELOPING A LOOP TRAIL
BETWEEN HALSEY FOREBAY &
AFTERBAY

EVALUATE POTENTIAL DEMAND
& FEASIBILITY OF ENHANCING
AGRICULTURAL USES

INSTALL DAY USE AREA
ALONG NEW AIRPORT ROAD

- EXPLORE FEASIBILITY OF INSTALLING A DAY USE AREA
SECURE AREAS SURROUNDING CANAL FOR PUBLIC SAFETY

POTENTIAL MEASURES:

- DEVELOP NOXIOUS WEED MANAGEMENT, CULTURAL RESOURCES MANAGEMENT, FUELS MANAGEMENT, FOREST MANAGEMENT & FIRE MANAGEMENT & REPOSE PLANS
- INSTALL INTERPRETIVE SIGNAGE REGARDING LOCAL HISTORY & NATURAL RESOURCES
- CONDUCT SURVEYS OUTSIDE THE RELICENSING STUDY AREA TO IDENTIFY CULTURAL & BIOLOGICAL RESOURCES & ENABLE THEIR PROTECTION
- PROTECT CULTURAL SITES WITH LANDSCAPE MEASURES, SIGNAGE & RESTRICT OR FORMALIZE RECREATION USE
- COORDINATE WITH NATIVE AMERICAN ENTITIES WHEN CONDUCTING CULTURAL RESOURCE MEASURES
- USE BIOLOGICAL RESOURCE SURVEY DATA TO DETERMINE IF PREPARATION A WILDLIFE & HABITAT MANAGEMENT PLAN IS APPROPRIATE

Lower Drum Planning Unit

The Stewardship Council recommends close coordination with the upcoming relicensing effort to ensure consistency with proposed studies and subsequent actions to avoid any duplication of efforts. Given the range of biological, recreation, and cultural studies to be conducted and the study area boundaries, it is expected that most information needs on lands inside the FERC boundary will be met. Recommended additional study efforts or assessments are intended to provide only information that may not be obtained by relicensing studies and is considered necessary to fully support the LCP.

Outdoor Recreation

Potential Measure:

- *Develop a recreation management plan for lands outside the FERC boundary.*

Recreation uses on lands within the FERC boundary are managed under the existing Recreation Plan for the Drum-Spaulding Project, which may be updated as part of relicensing. However, there is no management guidance for recreation occurring on lands outside of the FERC boundary, which includes approximately 70% of the planning unit. Therefore, the Stewardship Council recommends developing a recreation management plan for lands outside the FERC boundary. Suggested elements of the recreation management plan include developing a recreation monitoring program, evaluating recreation needs, developing a dispersed recreation use management component, and developing an operations and maintenance program for any facilities developed outside of the FERC boundary. Development of the recreation management plan should be coordinated with relicensing efforts and any future FERC license required measures and plans.

Potential Measures:

- *Explore potential public access points for Rock Creek Reservoir.*
- *Install a day use area at Rock Creek Reservoir including a parking area, picnic benches, loop trail, restrooms, fishing platform, and shade structure.*
- *Secure flumes and canals surrounding Rock Creek Reservoir and Wise Forebay for public safety.*

Rock Creek Reservoir, located within the Auburn metropolitan area, currently supports occasional informal day use, including hiking and fishing. Surrounding development pressures make this area ideal for a community-oriented park and recreation facility, including a parking area, picnic benches, restrooms, fishing platform, and shade structure. The feasibility of developing a loop trail, which would require gaining an easement across private property, would be evaluated. All recreation and access enhancements would be coordinated with Nevada Irrigation District as they own a water treatment plant near the reservoir. Additional public access points, or upgrades to existing entrance points, would be considered along New Airport Road, Bell Road, or Grass Valley Highway. In addition, fencing would be installed at key locations to eliminate access to the flumes and canals. All new or renovated recreation facilities within the planning unit would meet ADA compliance standards.

Potential Measure:

- *Install a day use area along New Airport Road including a parking area, picnic benches, loop trail, restrooms, and shade structure.*

A 25-acre parcel, surrounded by new residential development and located just south of Rock Creek Reservoir and along New Airport Road, contains oak woodlands and a rolling hill landscape. The location and surrounding development make it a prime location for a community-oriented park and recreation facility. Recommended facilities at the New Airport Road parcel include a parking area, picnic benches, loop trail, restrooms, and shade structure.

Potential Measure:

- *Explore the feasibility of installing a day use area at Wise Forebay including a picnic bench and formalized trail.*

The Stewardship Council also recommends exploring the potential for a small day use facility at Wise Forebay. While the current walk-in only access would be maintained, the installation of additional day use facilities would be explored. Facilities may include a picnic bench and formalized trail. For enhanced public safety, fencing may also be required to eliminate access to the canal in this area.

Potential Measure:

- *Explore the potential for a trail connecting Halsey Forebay and Afterbay.*

In addition to the new day use areas, the Stewardship Council recommends exploring the potential for a trail connecting Halsey Forebay and Afterbay. Although hiking takes place on informal trails, there are no designated trails that fully connect the lakes. Due to the potential for cultural resources within the planning unit, the lands should be surveyed for cultural resources prior to implementation. Formalizing or limiting recreation in the vicinity of cultural sites may limit disturbance to sensitive resources.

Potential Measure:

- *Install interpretive signage regarding local history and natural resources.*

The Stewardship Council recommends the addition of interpretive signage or displays depicting the history of mining activities, hydropower, prehistoric uses, and species found in the Lower Drum area. This measure would educate the public about some of the values that make the Lower Drum area special and enhance visitor enjoyment, appreciation, and concern for stewardship of the area.

Agricultural Uses

Potential Measures:

- *Develop a baseline conditions report that describes current agricultural, physical, and overall biological conditions of the area, including current use and state of improvements.*
- *Evaluate potential demand and feasibility for enhancing agricultural uses.*

Currently, there are two beekeeping leases within the planning unit and horse grazing takes place on 5 acres near immediately adjacent to the City of Auburn. The Stewardship Council

recommends evaluating the potential enhance these agricultural uses. To determine whether enhancement is feasible, local demand, the presence of noxious weeds (specifically star thistle, which is known to exist in the area and is toxic to horses), water quality issues, and appropriate locations and infrastructure limitations would have to be evaluated. A baseline conditions report would be developed that describes current agricultural, physical, and overall biological conditions of the area, including current use and state of improvements. The Stewardship Council recommends protecting these existing agricultural uses from encroachment to ensure the continued use of these lands for grazing, beekeeping, and open space.

Fish, Plant, and Wildlife Habitat

Potential Measure:

- *Conduct surveys outside the relicensing study area to identify biological resources and enable their protection.*

Currently, there is little biological information available for the planning unit. While the upcoming FERC relicensing process will incorporate habitat and species studies, it is likely that lands outside the FERC boundary would not be studied. Therefore, the Stewardship Council recommends surveying outside the relicensing study area for biological resources, such as sensitive plant and wildlife species, to gain a better understanding of existing habitats and species. Such information would be valuable in making future management decisions.

Potential Measure:

- *Use biological resource survey data to determine if preparation of a wildlife and habitat management plan is appropriate.*

The Stewardship Council also recommends using biological resource survey data to determine if preparation a wildlife and habitat management plan is appropriate. The planning unit contains potential habitat for several special status species including the coast horned lizard, big-scale balsamroot, and Brandegee's clarkia, and recommended surveys may reveal additional special status plants and wildlife. Once recommended surveys are completed, and if a wildlife and habitat management plan is determined necessary, potential habitat enhancements and restoration opportunities can be identified and developed into a comprehensive plan describing goals and objectives for habitat and species, as well as measures to enhance and protect habitat for both wildlife and plant species. Monitoring of species and/or habitats would also be developed as a component of the plan. If developed, the wildlife and habitat management plan should be consistent with the noxious weed, forest, cultural resources, and fuels management plans as well as relevant FERC license required plans.

Potential Measures:

- *Evaluate potential impacts of formalizing additional recreation uses on habitat values, particularly in the Rock Creek Reservoir area.*
- *Consider establishing a nature preserve at Rock Creek Reservoir.*

Valuable habitat and natural resources are present in the planning unit. Recommendations focus on protecting the lands and associated habitat from potential impacts due to increasing development pressure and recreation use. Rock Creek Reservoir is an important natural area in a developed landscape. The Stewardship Council recommends protection of sensitive resources by using the area as a nature preserve and installing protective fencing at key locations for habitat

protection and preservation. Preservation of Rock Creek Reservoir would offer open space protection and high value habitat conservation.

Potential Measure:

- *Develop a noxious weed management plan for the planning unit in coordination with Placer and Nevada Counties.*

Noxious weeds are known to occur within the planning unit, specifically around Halsey Forebay, Wise Forebay, and Rock Creek Reservoir, and likely occur in other areas as well. Currently, there is no noxious weed management plan for the Lower Drum area. To protect native habitat and plants, the Stewardship Council recommends developing a noxious weed management plan for the planning unit. This plan should be developed in coordination with Placer and Nevada Counties and local stakeholders and should be consistent with future FERC license required plans.

Sustainable Forestry

Potential Measures:

- *Evaluate existing timber inventory data and supplement as appropriate.*
- *Develop a forest management plan for the planning unit to promote natural forest development and structural and physical diversity in forests for long-term ecological, economic, social, and cultural benefits.*

This planning unit has 255 timbered acres currently managed under a Salvage prescription. Therefore, the Stewardship Council recommends developing a forest management plan through the evaluation of existing forest inventory data and supplemented with additional information, when appropriate. This baseline information would be used to determine appropriate forest management practices as well as forest monitoring and timber extraction goals. In addition to supporting natural forest development, the forest management plan would promote holistic watershed management. As this is an area managed under the Salvage prescription, snags and downed woody debris would be maintained in the planning unit when not deemed a safety, fire, or disease hazard as these are important components for wildlife habitat and forest regeneration. The forest management plan would be compatible with current and recommended recreation uses; noxious, wildlife and habitat, and fuels management plans; as well as relevant FERC license required plans as part of the relicensing process.

Potential Measures:

- *Develop a fire management and response plan in coordination with Placer and Nevada Counties.*
- *Develop a fuels management plan to ensure long-term forest health and reduce fuel loading and fire hazard.*

As previously mentioned, the planning unit includes lands surrounding the City of Auburn as well as lands adjacent to or near other residential and light industrial development. The planning unit also contains recreation facilities and the drinking water reservoir for the City of Auburn. Therefore, the Stewardship Council recommends both a fire management and response plan to ensure fire preparedness and enhance fire prevention as well as a fuels management plan. The fire management and response plan would outline appropriate actions to take when a fire occurs

and reporting procedures that would be useful for the community. The fuels management plan would reduce fuel loading and fire hazard, in addition to ensuring long-term forest health. The forest, fire management and response, and fuels management plans would be developed in coordination with Placer and Nevada Counties, the FERC relicensing process, and adjacent landowners.

Preservation of Historic Value

Potential Measures:

- *Conduct surveys outside the relicensing study areas to identify cultural resources and enable their protection.*
- *Develop a cultural resources management plan for the planning unit.*
- *Coordinate with Native American entities when conducting cultural resource measures.*
- *Protect cultural sites with landscape measures, signage, and restrict or formalize recreation use.*

The historic component of the recommendations would promote the protection and identification of cultural resources in the Lower Drum Planning Unit. The Stewardship Council recommends conducting surveys outside the relicensing study area to identify cultural resources and enable their protection. To protect these resources, the Stewardship Council recommends development of a cultural resources management plan. Any cultural resources identified during surveys could be protected through the installation of signage and landscape measures such as boulders and rail fences. All cultural resource surveys and protection measures would be conducted in coordination with Native American entities.

Open Space

Potential Measure:

- *Apply permanent conservation easements to ensure a higher level of open space protection.*

Finally, the Stewardship Council recommends preserving open space values through permanent conservation easements. Conservation easements would describe all prohibited uses to maintain open space values, including the level of uses allowed. No new significant developments are recommended, thus the scenic quality of the planning unit would be protected.