

## FEE TITLE DONEE RECOMMENDATION LOWER DRUM PLANNING UNIT

### EXECUTIVE SUMMARY

The Stewardship Council was created to oversee Pacific Gas and Electric's (PG&E) Land Conservation Commitment, as set forth in the Settlement and Stipulation,<sup>1</sup> to protect over 140,000 acres of land and to preserve and enhance, on an overall basis, the following six beneficial public values (BPVs): protection of the natural habitat of fish, wildlife, and plants; preservation of open space; outdoor recreation by the general public; sustainable forestry; agricultural uses; and historic values. The Stewardship Council is responsible for developing a land conservation plan and recommending qualified organizations to become involved in the future stewardship of these lands.

The Lower Drum planning unit, located in Nevada and Placer counties, consists of 45 parcels encompassing approximately 1,106 acres of land. Approximately 721 acres have been identified by PG&E as lands outside of Federal Energy Regulatory Commission (FERC) project boundaries and not necessary for current and future utility operations. Therefore, these lands have been made available for fee title donation, with the remaining approximately 385 acres to be retained by PG&E. The Stewardship Council received land stewardship proposals (LSPs) from three organizations interested in receiving a donation of fee title to lands in this planning unit: Placer County, Auburn Area Recreation and Park District (ARD), and Placer County Water Agency (PCWA).

The Stewardship Council Board of Directors (Board) previously adopted two fee title recommendations and one conservation easement holder recommendation for this planning unit. At the September 15, 2011 board meeting, the Board approved Placer County to receive fee title to approximately 15 acres located within parcel 871, and approved Placer Land Trust (PLT) as the conservation easement holder for the entire planning unit. At the November 16, 2011 meeting, the Board approved ARD to receive fee title to approximately 64 acres within four parcels (parcels 888, 893, 894, and 895).

The Stewardship Council staff made the following recommendation, which was endorsed by the Watershed Planning Committee:

**PG&E** to retain fee title to a total of approximately 642 acres available for donation within all or portions of 16 parcels (parcels 871-873, 876, 879, 884-889, 891, 897, 901, 902, 907).<sup>2</sup>

This acreage is in addition to the 385 acres originally designated by PG&E for retention in this planning unit.

---

<sup>1</sup> California Public Utilities Commission Decision 03-12-035, December 18, 2003 (the "Settlement") and the Stipulation Resolving Issues Regarding the Land Conservation Commitment dated September 25, 2003 (the "Stipulation").

<sup>2</sup> This acreage includes the approximately 200 acres in which the PCWA expressed interest in its LSP, as well as 442 acres being recommended for PG&E retention due to a lack of donee interest.

If this recommendation is adopted by the Board, the Stewardship Council would work with PLT and PG&E regarding the specific terms of the conservation easement(s) for the lands being retained by PG&E. The conservation easement(s) would be part of the Land Conservation and Conveyance Plan (LCCP) developed for the planning unit. The proposed LCCP would be made available for public review and comment before it is approved by the Board. Adoption of the LCCP by the Board would be the final step in the Stewardship Council's process for selecting donees.

## I. INTRODUCTION AND BACKGROUND

### *a. Planning Unit Description*

The Lower Drum planning unit is located in close proximity to the City of Auburn, and offers both recreation and open space opportunities (see attached maps). The elevation of this planning unit ranges between 700 to 2,000 feet. It is located in the Sierra Nevada foothills and is composed of small reservoirs, oak and pine woodlands, wetlands, and grasslands. The lands are located predominantly in Placer County with one small parcel located in Nevada County along Interstate 80. The lands in the vicinity of the planning unit are either privately owned or owned by the Bureau of Land Management, California Department of Fish and Game (DFG), Bureau of Reclamation, or Placer County.

The Lower Drum planning unit provides suitable habitat for a variety of species within its reservoirs, riparian corridors along the Bear River, oak and pine woodlands, and grasslands. Special status species found in this planning unit include the California red-legged frog, foothill yellow-legged frog, northwestern pond turtle, and numerous bat species.

Fishing and hiking are the primary recreational activities. Most of the recreational facilities are focused at Halsey Forebay, which is stocked with fish by DFG, making it a popular local fishing spot. Additional reservoirs located within the planning unit include Rock Creek, Halsey Afterbay, and Wise Forebay. However, few recreational enhancements have been developed at these locations.

Forest resources consist of 255 acres of low elevation pine and mixed hardwood forests within two Timber Management Units. Current PG&E timber management consists of salvage only, in which management activities are restricted to mitigating for watershed and forest health issues, including emergency salvage harvesting following insect attack or a catastrophic event.

The Southern Maidu and Washoe once lived in the area around the Lower Drum planning unit. At the time of drafting the Land Conservation Plan (LCP Volume II), four historic and/or prehistoric sites had been identified within the planning unit. However, only limited portions of the planning unit have been inventoried for cultural resources.

A further description of this planning unit, including the BPVs and the management objectives that were previously approved by the Board for this planning unit, is included in the attached excerpted section of Volume II of the LCP.

*b. Donee Evaluation Process*

The Stewardship Council received statements of qualifications (SOQs) from eight organizations interested in acquiring fee title to lands available for donation within this planning unit. A list of organizations that submitted an SOQ is attached. Of these organizations, the following three organizations submitted LSPs for the Lower Drum planning unit:

- Auburn Area Recreation and Park District (ARD)
- Placer County
- Placer County Water Agency (PCWA)

The Board previously adopted two fee title recommendations and one conservation easement holder recommendation for the Lower Drum planning unit. At the September 15, 2011 board meeting, the Board approved Placer County to receive fee title to approximately 15 acres located within parcel 871, and approved PLT as the conservation easement holder for the planning unit. At the November 16, 2011 meeting, the Board approved ARD to receive fee title to approximately 64 acres within four parcels (parcels 888, 893, 894, and 895). The LSP submitted by PCWA was the last proposal considered for this planning unit since the lands requested by PCWA did not overlap with the lands requested by Placer County or ARD.

**II. EVALUATION**

*a. PCWA's Land Stewardship Proposal*

Following Stewardship Council staff's review of PCWA's LSP and further discussion with PCWA, staff has concluded that PG&E retention of the subject 200 acres of interest to PCWA would be the most appropriate outcome. In a letter dated January 6, 2012, PCWA stated that it had no objection to PG&E retaining those lands but believed it would be in the public interest for the conservation easement to provide the flexibility for the retained lands to be utilized for future PCWA water treatment and delivery facilities.

*b. PG&E Retention*

According to PG&E, its management of the watershed lands is guided by a number of considerations, including optimizing benefits to PG&E customers, shareholders, and the environment. The retention of the lands within the Lower Drum planning unit by PG&E, at least in the near term, would likely result in continuing the current management regime, subject to a newly established conservation easement. PG&E's management of the subject watershed lands could also be affected by the future expansion or modification of PCWA's existing water delivery facilities. Specifically, PCWA has indicated that expansion of its facilities is likely to become necessary and that it will have the right to expand or modify its water delivery facilities per the requirements of the Settlement and Stipulation.

*c. Requirements of the Settlement and Stipulation*

The Stewardship Council's recommendation that PG&E retain fee title to certain lands within this planning unit is subject to compliance with all the requirements of the Land Conservation Commitment. Several of these requirements are highlighted below.

- A conservation easement would be established on all lands within the Lower Drum planning unit.
- PG&E currently manages one license for grazing and two licenses for bee hives and the production of honey on lands subject to this recommendation. The conservation easement will recognize that agricultural uses are one of the beneficial public values that are to be protected.
- The conservation easement will permit the existing economic uses on the lands to continue, including existing agreements between PG&E and PCWA.
- The conservation easement will include an express reservation of right for continued operation and maintenance of hydroelectric facilities and associated water delivery facilities, including project replacements and improvements required to meet existing and future water delivery requirements for power generation and consumptive water use by existing users, compliance with any Federal Energy Regulatory Commission (FERC) license, FERC license renewal or other regulatory requirements.
- The conservation easement will reserve the authority of PG&E or other holders of applicable water rights to apply to the applicable regulatory authority to increase or otherwise modify the water storage capacities of existing licensed facilities.

### III. PUBLIC COMMENTS

The Stewardship Council has implemented a public outreach program to engage stakeholders and solicit public input on the development and implementation of the land conservation plan. A summary of key public outreach activities and public comments associated with the Lower Drum planning unit is attached.

### IV. RECOMMENDATION

Stewardship Council staff is recommending that PG&E retain fee title to a total of approximately 642 acres available for donation within all or portions of 16 parcels (parcels 871-873, 876, 879, 884-889, 891, 897, 901, 902, 907).<sup>3</sup> This acreage is in addition to the 385 acres originally designated by PG&E for retention in this planning unit.

### V. NEXT STEPS FOLLOWING THE BOARD'S RECOMMENDATION

If the Board adopts this recommendation on March 7, 2012, the Stewardship Council would work with PLT and PG&E regarding the specific terms of the conservation easement(s) for the lands to be retained by PG&E. The conservation easement(s) will be part of the LCCP developed for the planning unit. The proposed LCCP would be made available for public review and comment before it is approved by the Board. Adoption of the LCCP by the Board would be the final step in the Stewardship Council's process for selecting donees.

---

<sup>3</sup> This acreage includes the approximately 200 acres in which PCWA expressed an interest in its LSP, as well as 442 acres being recommended for PG&E retention due to a lack of donee interest.

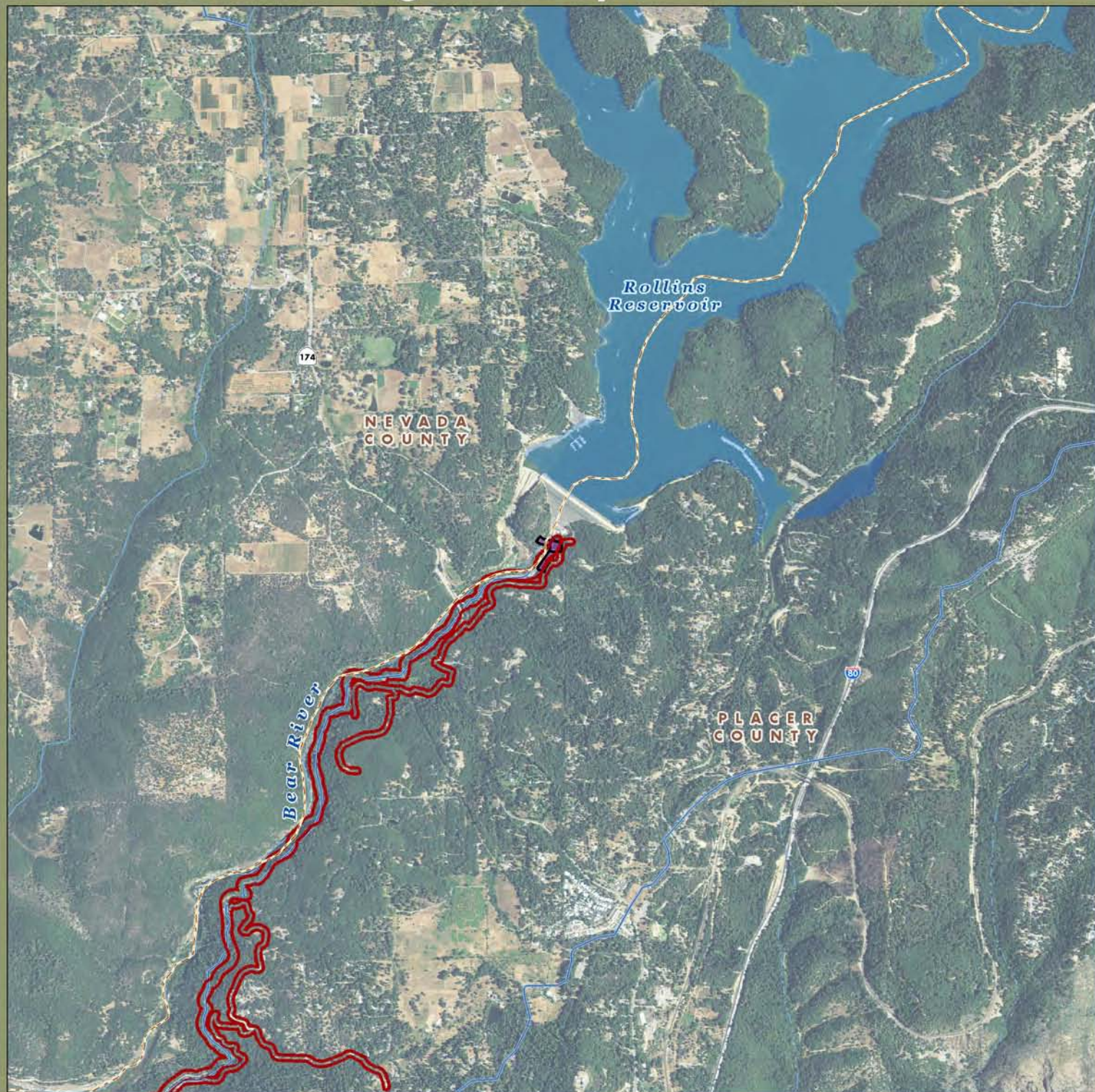


## ATTACHMENTS AND REFERENCE MATERIAL

- Lower Drum Planning Unit Map
- LCP Volume II Planning Unit Report for Lower Drum Planning Unit
- Organizations that Submitted SOQs for Lands Available in the Lower Drum Planning Unit
- Summary of Key Public Outreach Activities and Public Comments Associated with the Lower Drum Planning Unit



# Lower Drum Planning Unit: Map 1



 PG&E Lands Preliminarily Designated for Donation

 Certain Considerations May Make Donation Inadvisable

 PG&E Lands Preliminarily Designated for Retention

 FERC Boundary

Acreage and location of lands preliminarily designated for retention by PG&E outside the FERC boundary are approximate. FERC boundary is approximate and may change over time.



0 0.25 0.5 0.75 Miles

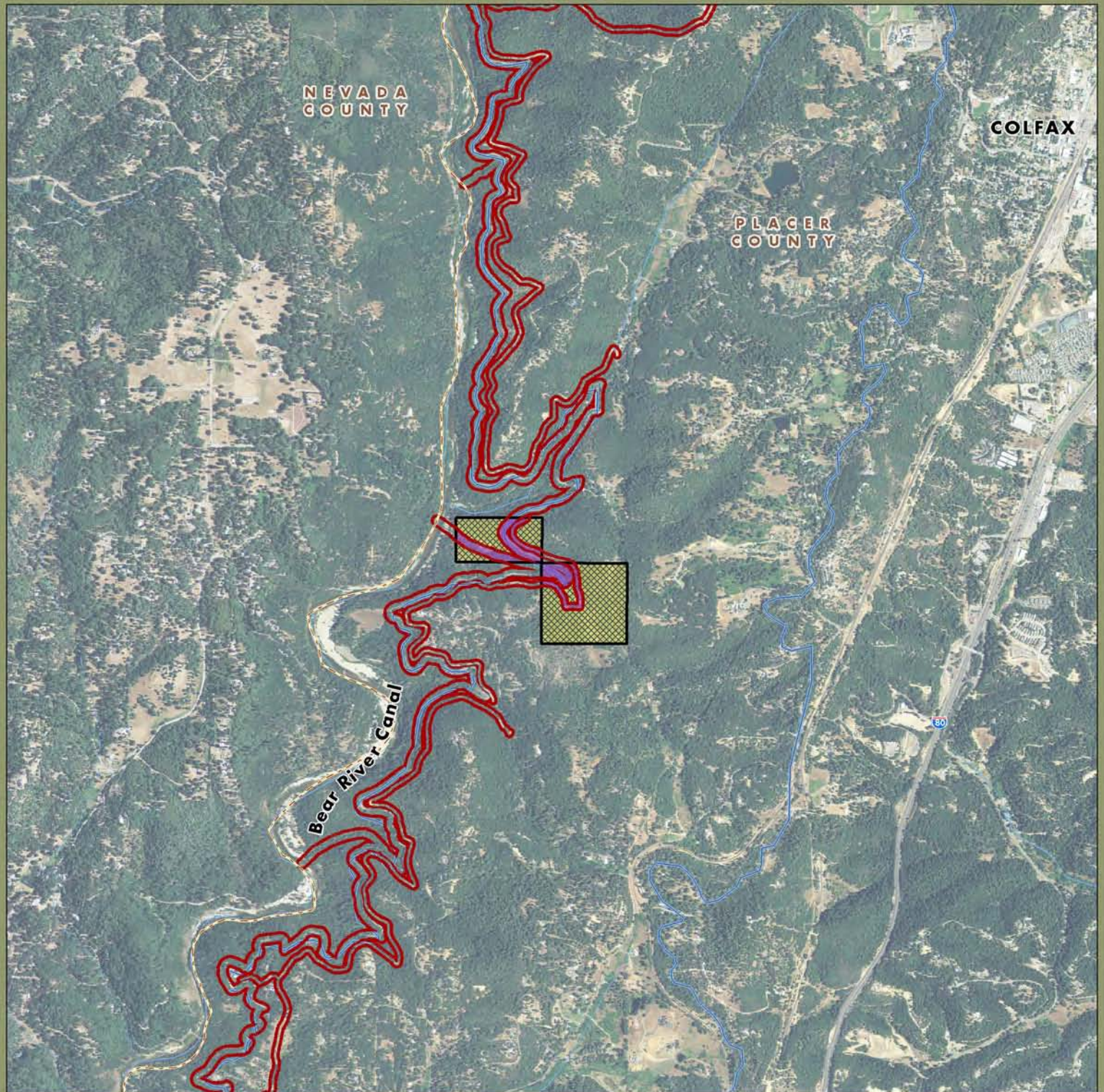
April 2011  
**AECOM**

Imagery: NAIP 2009





# Lower Drum Planning Unit: Map 2



PG&E Lands Preliminarily Designated for Donation

Certain Considerations May Make Donation Inadvisable

PG&E Lands Preliminarily Designated for Retention

FERC Boundary

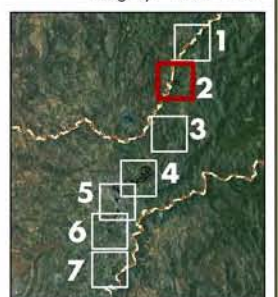
Acreage and location of lands preliminarily designated for retention by PG&E outside the FERC boundary are approximate. FERC boundary is approximate and may change over time.



0 0.25 0.5 0.75 Miles

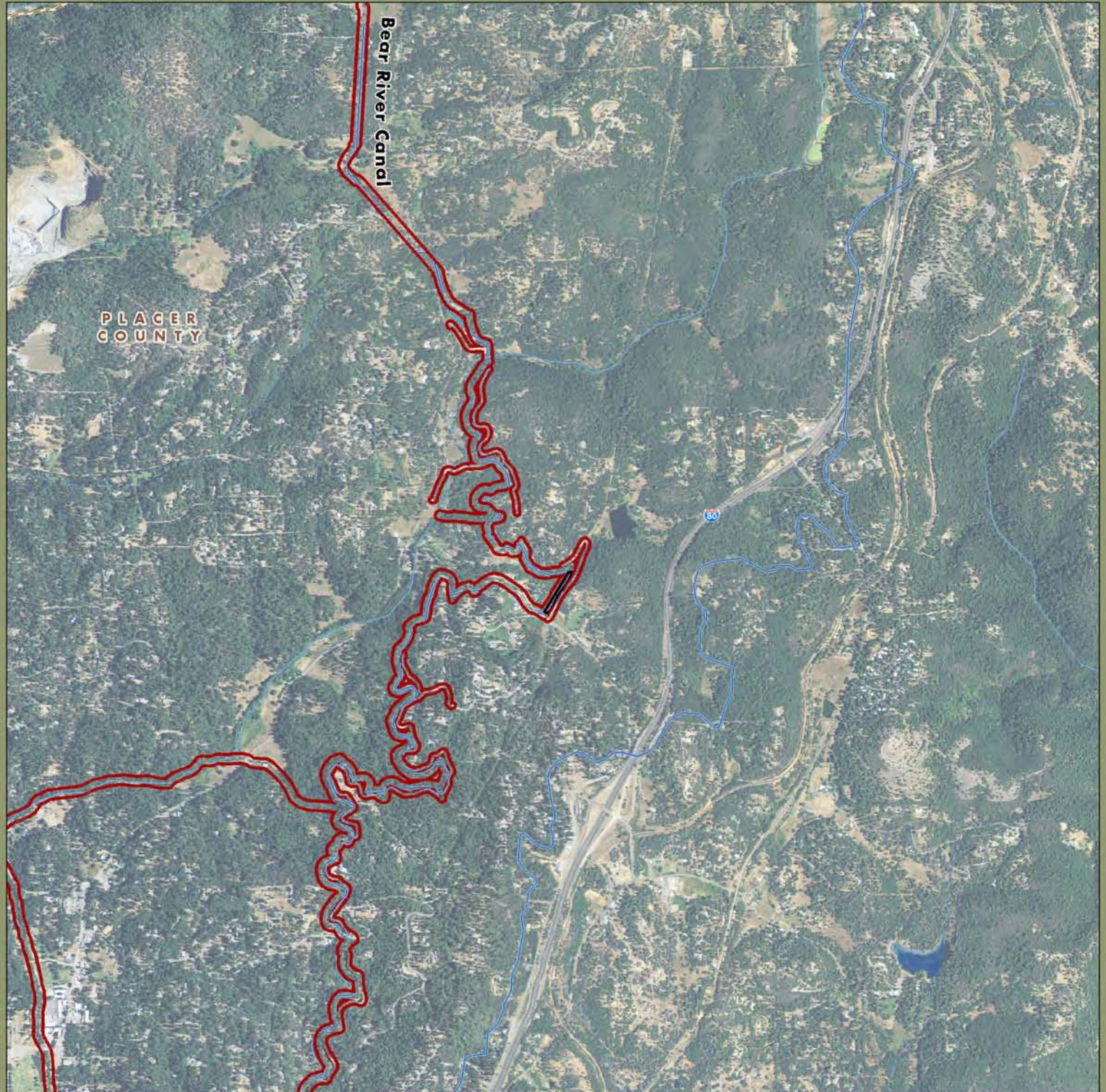
April 2011  
**AECOM**

Imagery: NAIP 2009





# Lower Drum Planning Unit: Map 3



 PG&E Lands Preliminarily Designated for Donation

 Certain Considerations May Make Donation Inadvisable

 PG&E Lands Preliminarily Designated for Retention

 FERC Boundary

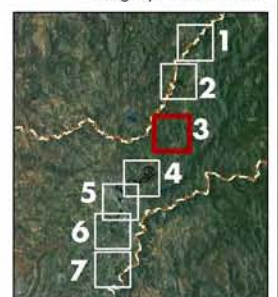
Acreage and location of lands preliminarily designated for retention by PG&E outside the FERC boundary are approximate. FERC boundary is approximate and may change over time.



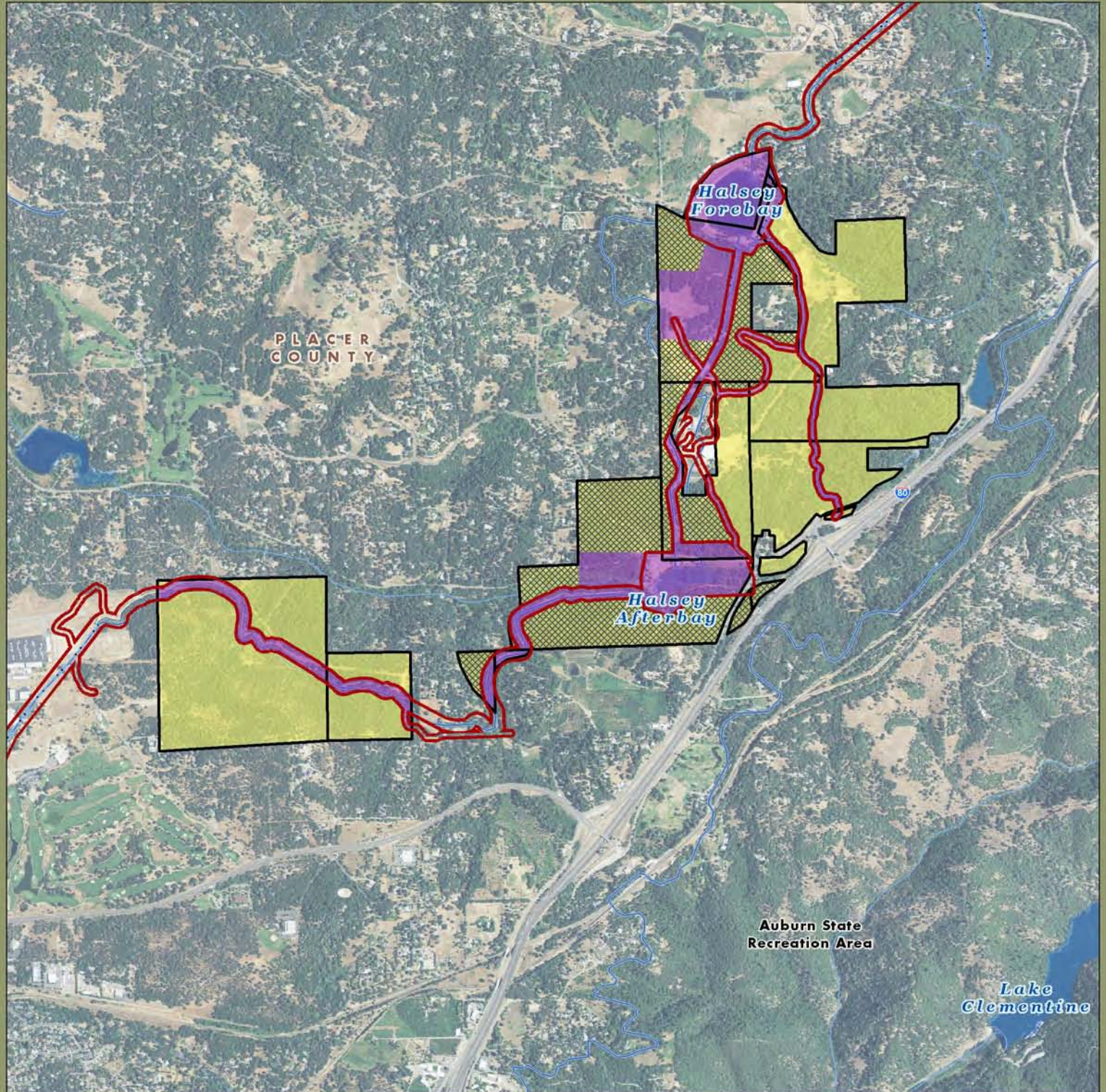
0 0.25 0.5 0.75 Miles



April 2011  
**AECOM**



Imagery: NAIP 2009







-  PG&E Lands Preliminarily Designated for Donation
-  PG&E Lands Preliminarily Designated for Retention

-  Certain Considerations May Make Donation Inadvisable
-  FERC Boundary

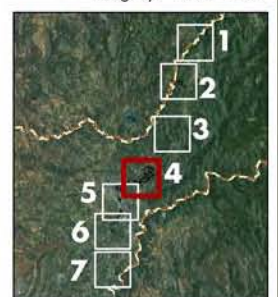
Acreage and location of lands preliminarily designated for retention by PG&E outside the FERC boundary are approximate. FERC boundary is approximate and may change over time.



0 0.25 0.5 0.75 Miles

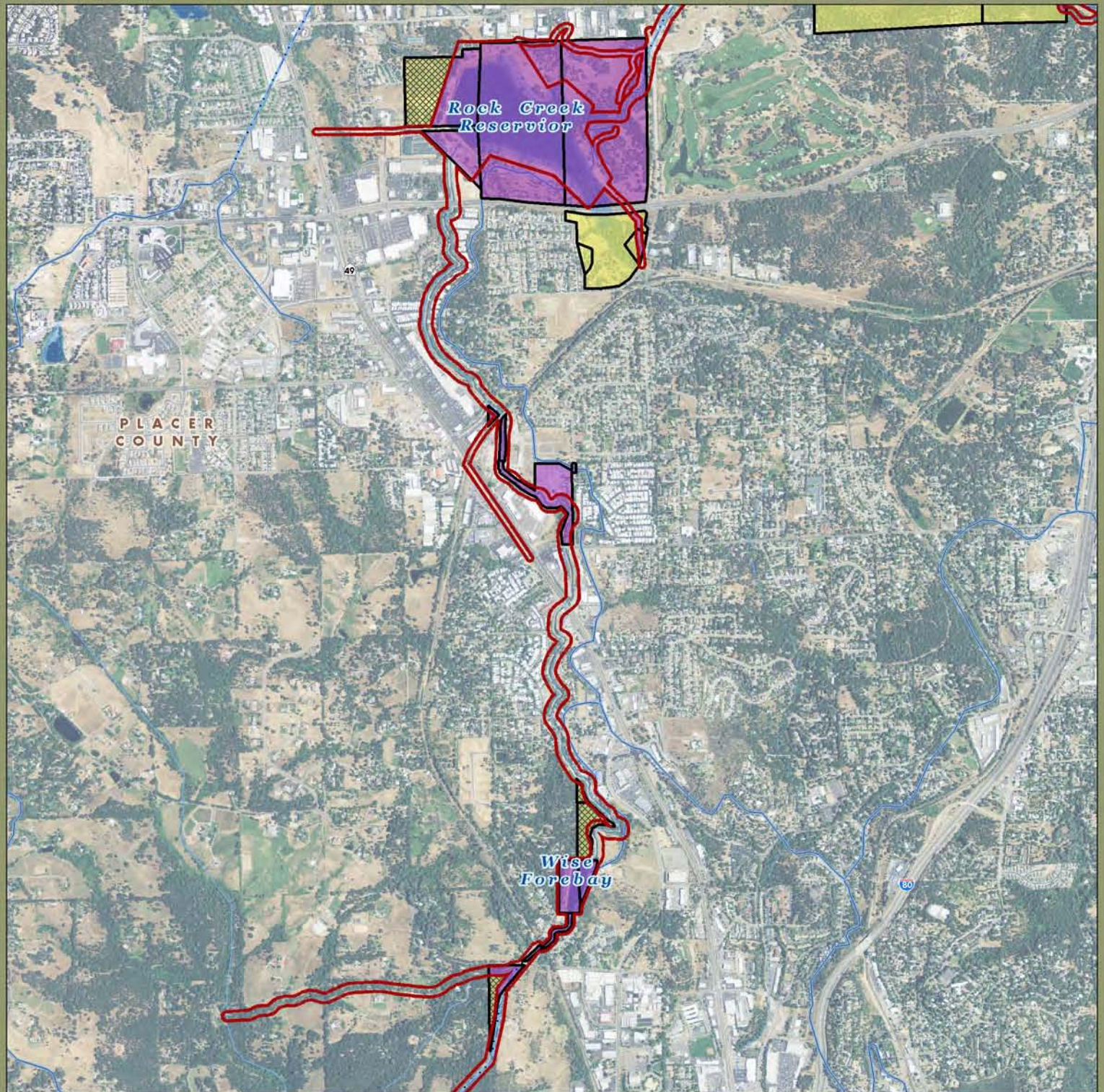
April 2011  
**AECOM**

Imagery: NAIP 2009






# Lower Drum Planning Unit: Map 5



 PG&E Lands Preliminarily Designated for Donation

 Certain Considerations May Make Donation Inadvisable

 PG&E Lands Preliminarily Designated for Retention

 FERC Boundary

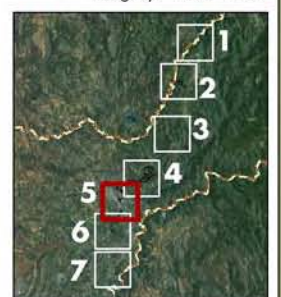
Acreage and location of lands preliminarily designated for retention by PG&E outside the FERC boundary are approximate. FERC boundary is approximate and may change over time.



0 0.25 0.5 0.75 Miles

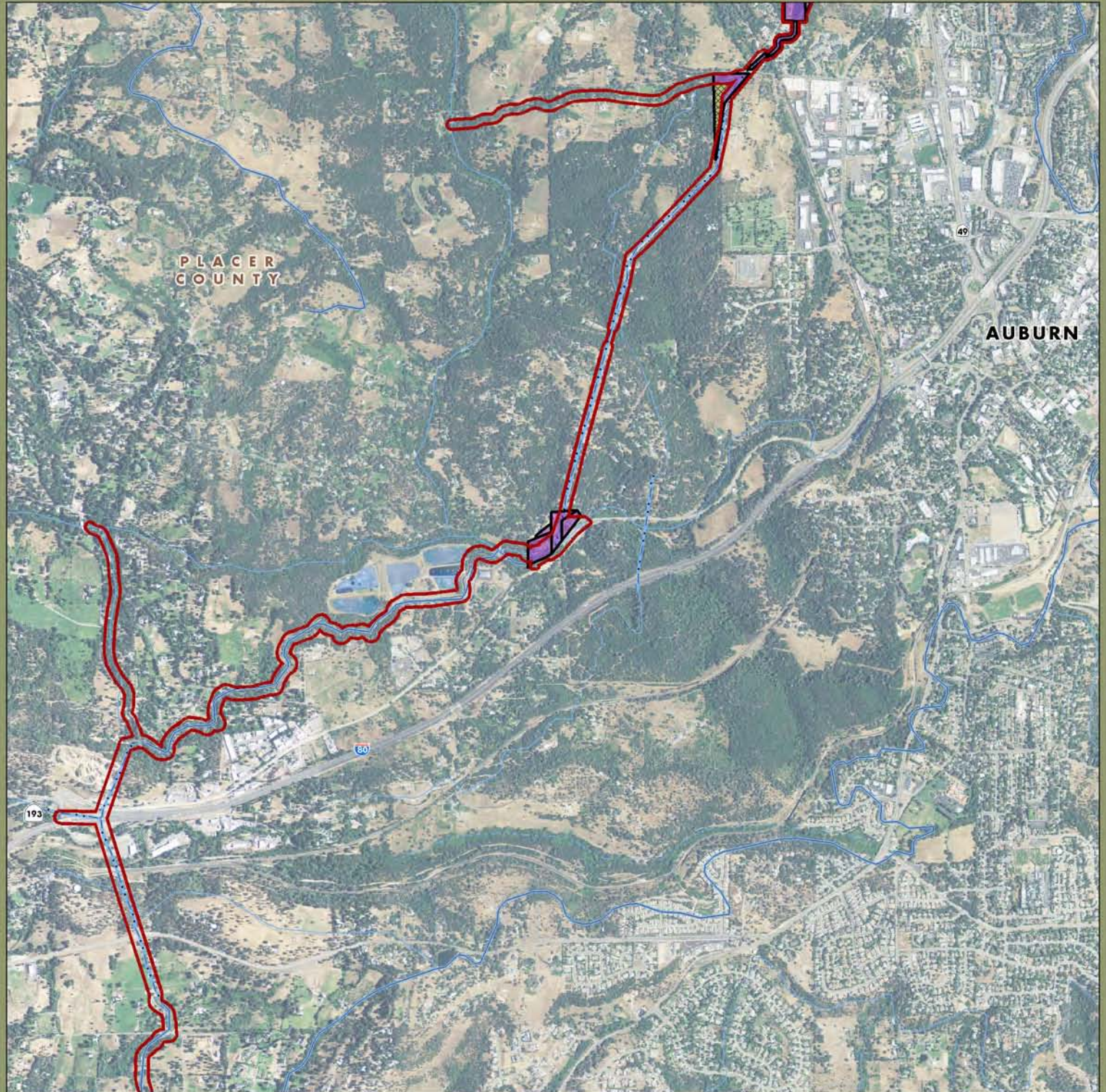
April 2011  
**AECOM**

Imagery: NAIP 2009






# Lower Drum Planning Unit: Map 6



 PG&E Lands Preliminarily Designated for Donation

 Certain Considerations May Make Donation Inadvisable

 PG&E Lands Preliminarily Designated for Retention

 FERC Boundary

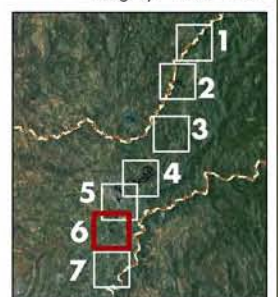
Acreage and location of lands preliminarily designated for retention by PG&E outside the FERC boundary are approximate. FERC boundary is approximate and may change over time.



0 0.25 0.5 0.75 Miles

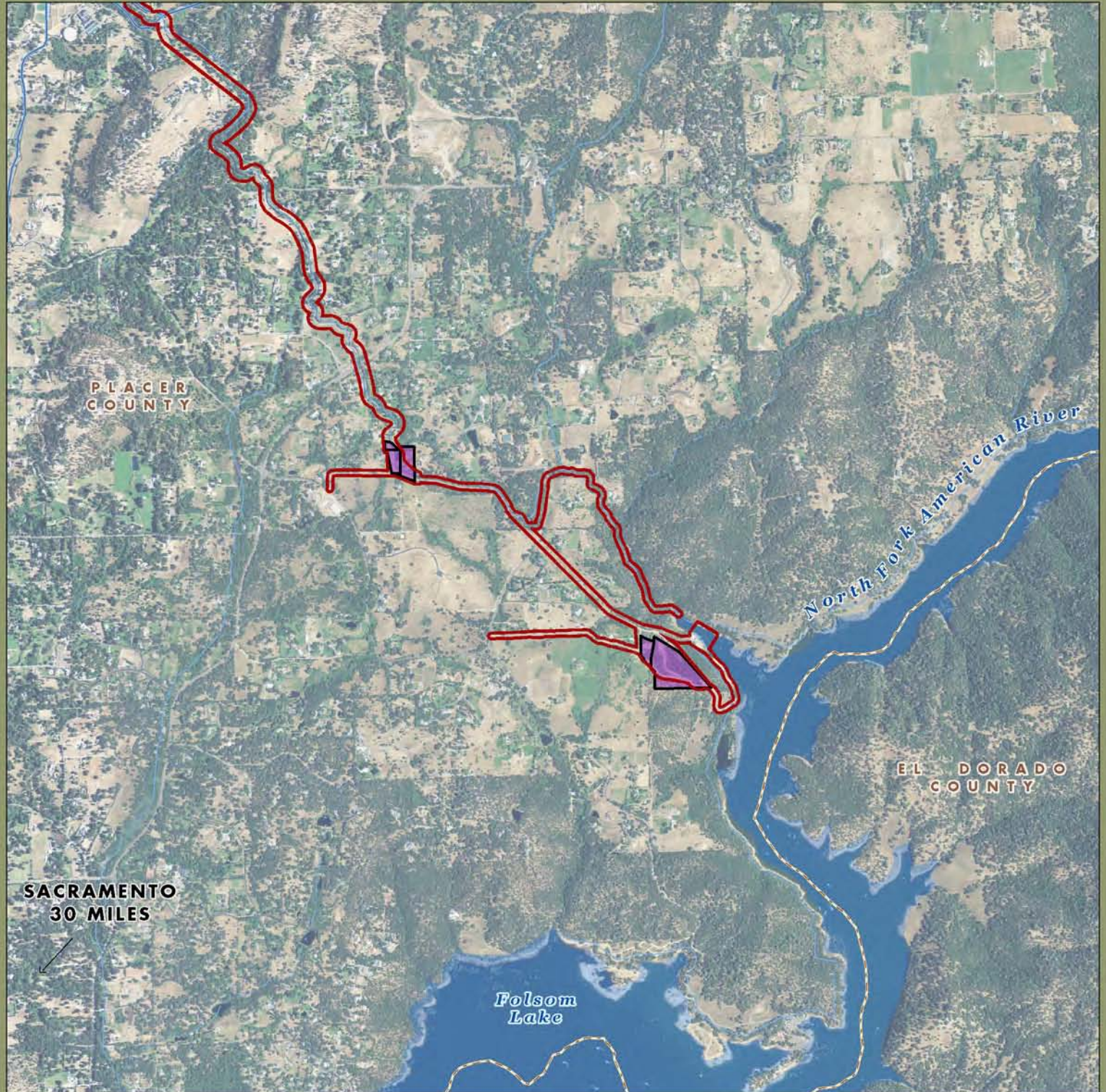
April 2011  
**AECOM**

Imagery: NAIP 2009






# Lower Drum Planning Unit: Map 7



 PG&E Lands Preliminarily Designated for Donation

 PG&E Lands Preliminarily Designated for Retention

 Certain Considerations May Make Donation Inadvisable

 FERC Boundary

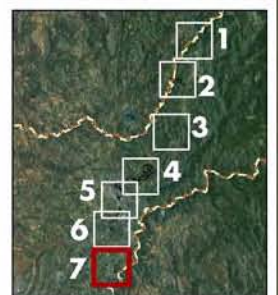
Acreage and location of lands preliminarily designated for retention by PG&E outside the FERC boundary are approximate. FERC boundary is approximate and may change over time.



0 0.25 0.5 0.75 Miles

April 2011  
**AECOM**

Imagery: NAIP 2009



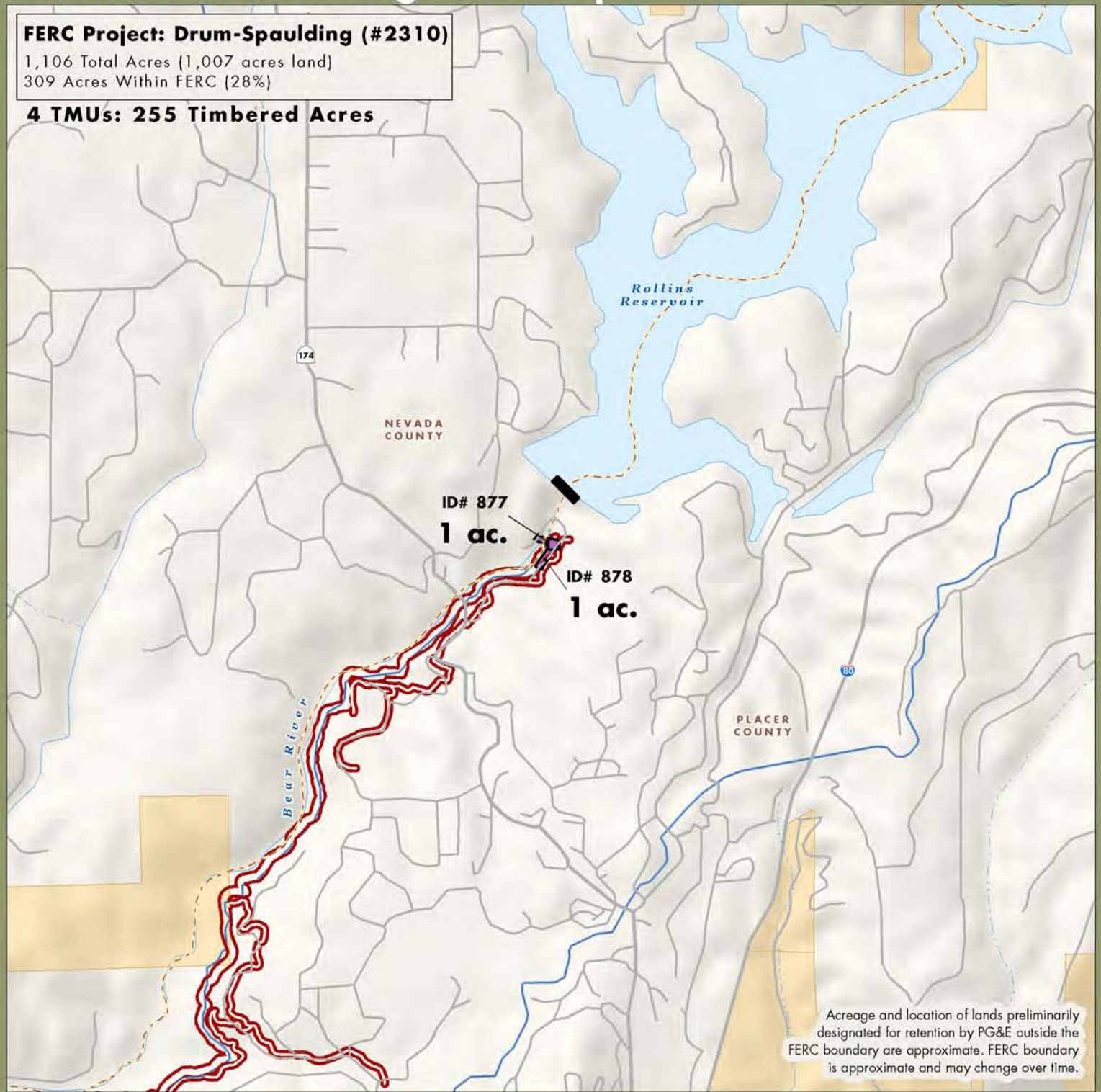


# Lower Drum Planning Unit: Map 1

## FERC Project: Drum-Spaulling (#2310)

1,106 Total Acres (1,007 acres land)  
309 Acres Within FERC (28%)

**4 TMUs: 255 Timbered Acres**



Acreage and location of lands preliminarily designated for retention by PG&E outside the FERC boundary are approximate. FERC boundary is approximate and may change over time.

- PG&E Lands Preliminarily Designated for Donation
- PG&E Lands Preliminarily Designated for Retention
- PG&E Lands Under Water
- # Legal Parcel Boundary and Id Number
- Certain Considerations May Make Donation Inadvisable
- FERC Boundary

- BLM
- BOR
- Private
- State
- Trail
- Campground
- Dam
- Day Use Area
- Fishing
- P Parking
- PH Powerhouse



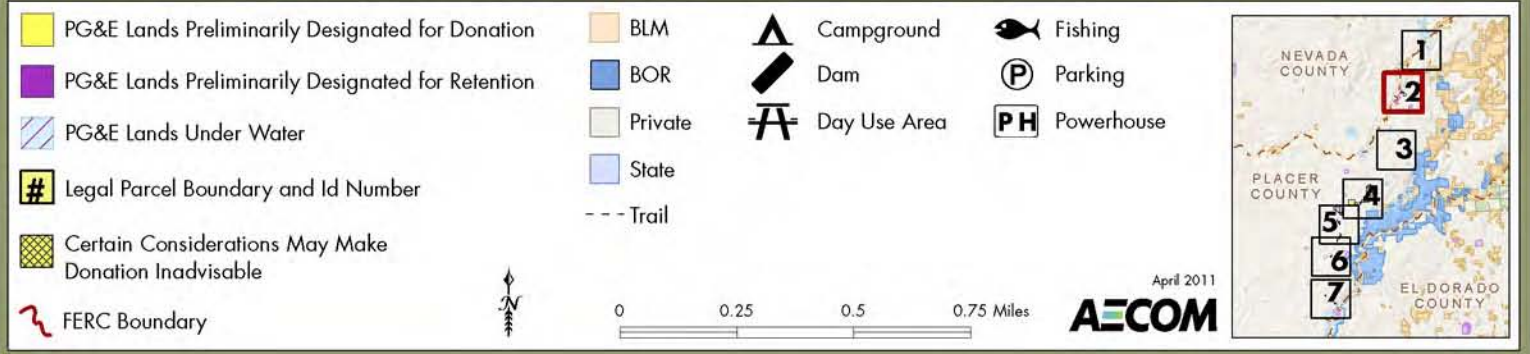
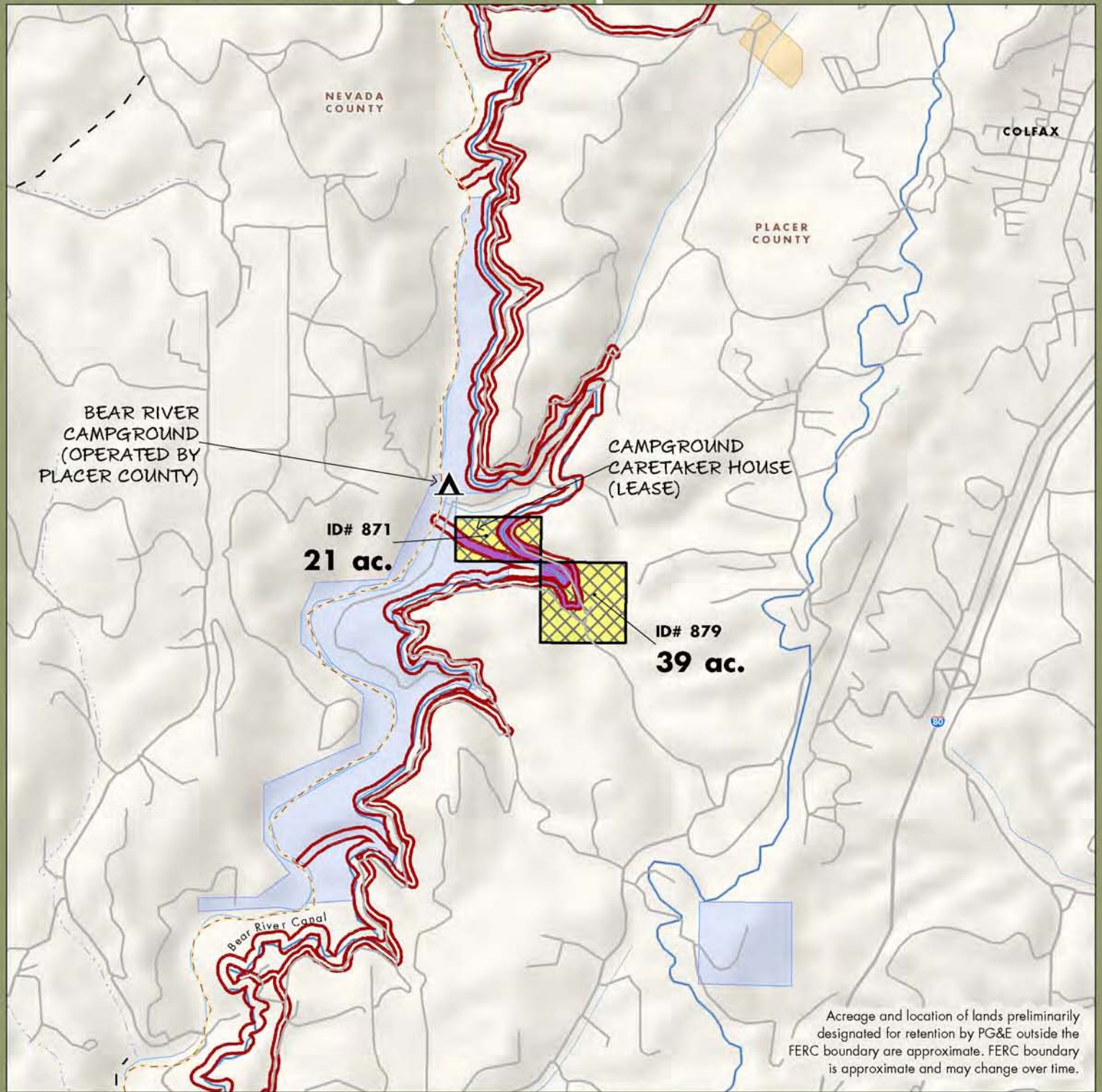
0 0.25 0.5 0.75 Miles

April 2011  
**AECOM**



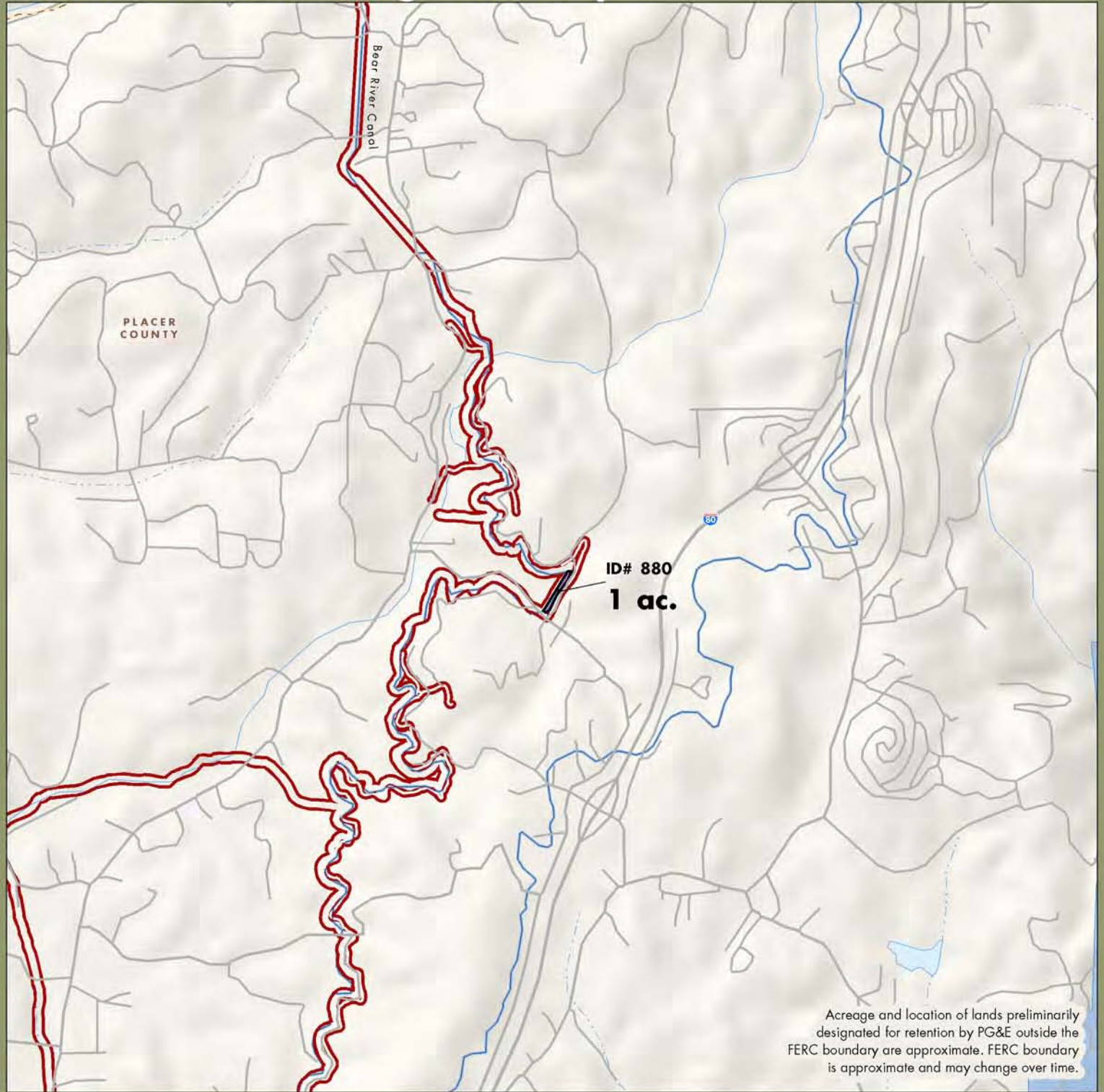


# Lower Drum Planning Unit: Map 2





# Lower Drum Planning Unit: Map 3



- PG&E Lands Preliminarily Designated for Donation
- PG&E Lands Preliminarily Designated for Retention
- PG&E Lands Under Water
- Legal Parcel Boundary and Id Number
- Certain Considerations May Make Donation Inadvisable
- FERC Boundary

- BLM
- BOR
- Private
- State
- Trail

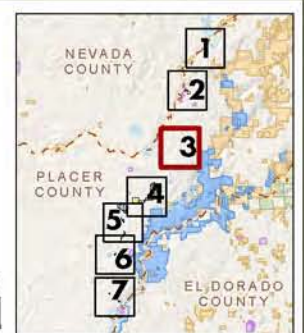
- Campground
- Dam
- Day Use Area

- Fishing
- Parking
- Powerhouse



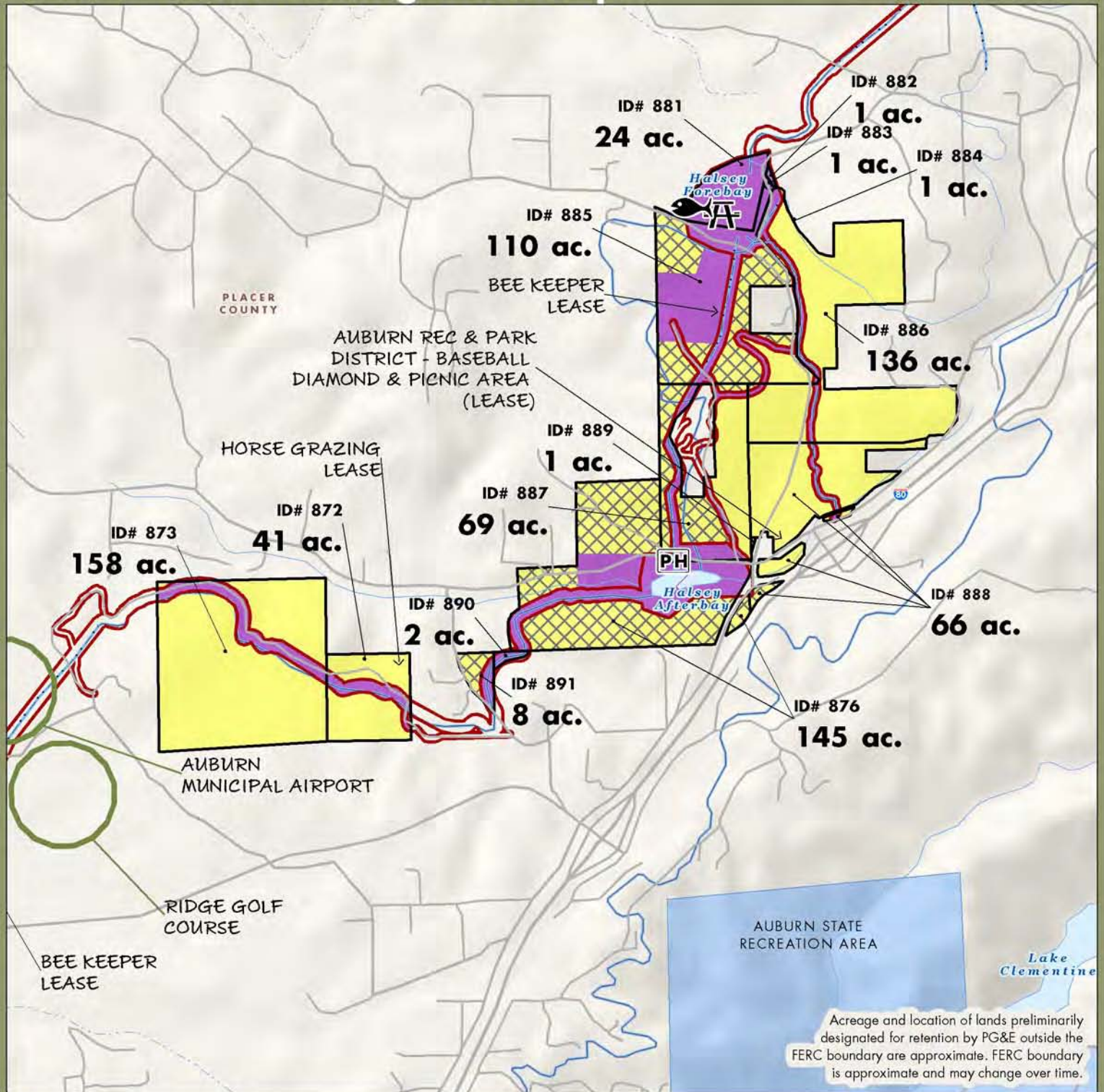
0 0.25 0.5 0.75 Miles

April 2011  
**AECOM**





# Lower Drum Planning Unit: Map 4



- PG&E Lands Preliminarily Designated for Donation
- PG&E Lands Preliminarily Designated for Retention
- PG&E Lands Under Water
- # Legal Parcel Boundary and Id Number
- Certain Considerations May Make Donation Inadvisable
- FERC Boundary

- BLM
- BOR
- Private
- State
- Trail

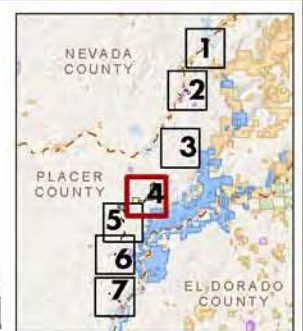
- Campground
- Dam
- Day Use Area

- Fishing
- Parking
- Powerhouse



0 0.25 0.5 0.75 Miles

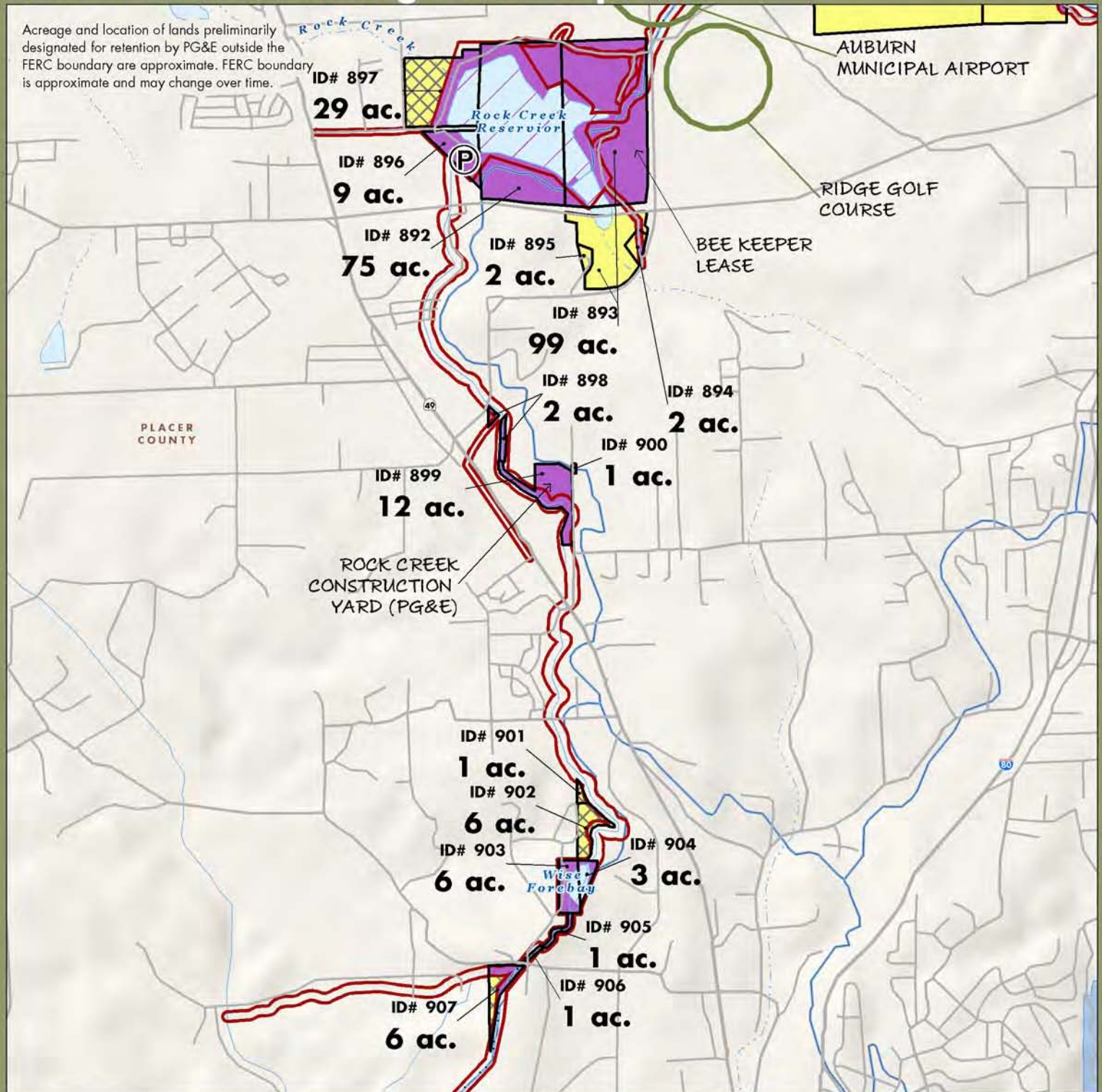
April 2011  
**AECOM**





# Lower Drum Planning Unit: Map 5

Acreage and location of lands preliminarily designated for retention by PG&E outside the FERC boundary are approximate. FERC boundary is approximate and may change over time.



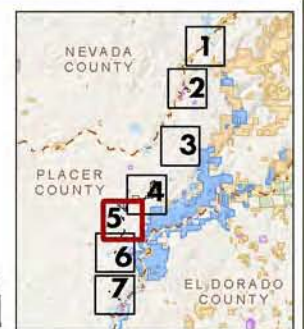
- PG&E Lands Preliminarily Designated for Donation
- PG&E Lands Preliminarily Designated for Retention
- PG&E Lands Under Water
- # Legal Parcel Boundary and Id Number
- Certain Considerations May Make Donation Inadvisable
- FERC Boundary

- BLM
- BOR
- Private
- State
- Trail
- Campground
- Dam
- Day Use Area
- F Fishing
- P Parking
- PH Powerhouse



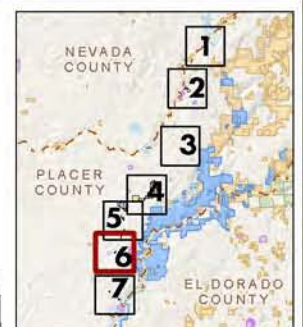
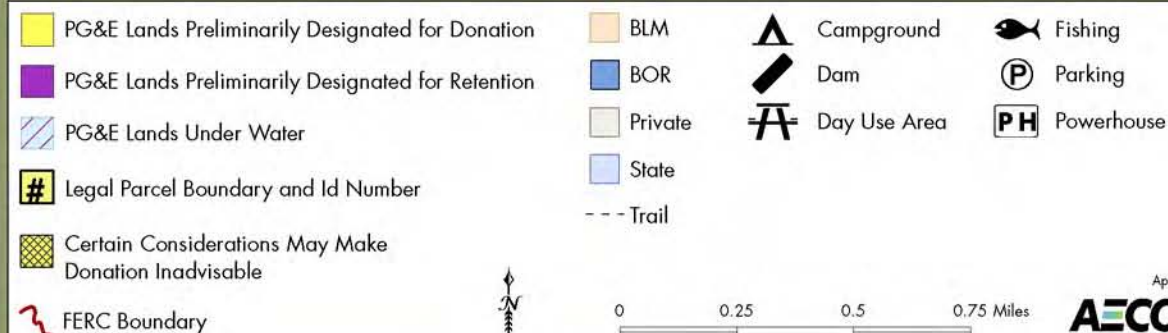
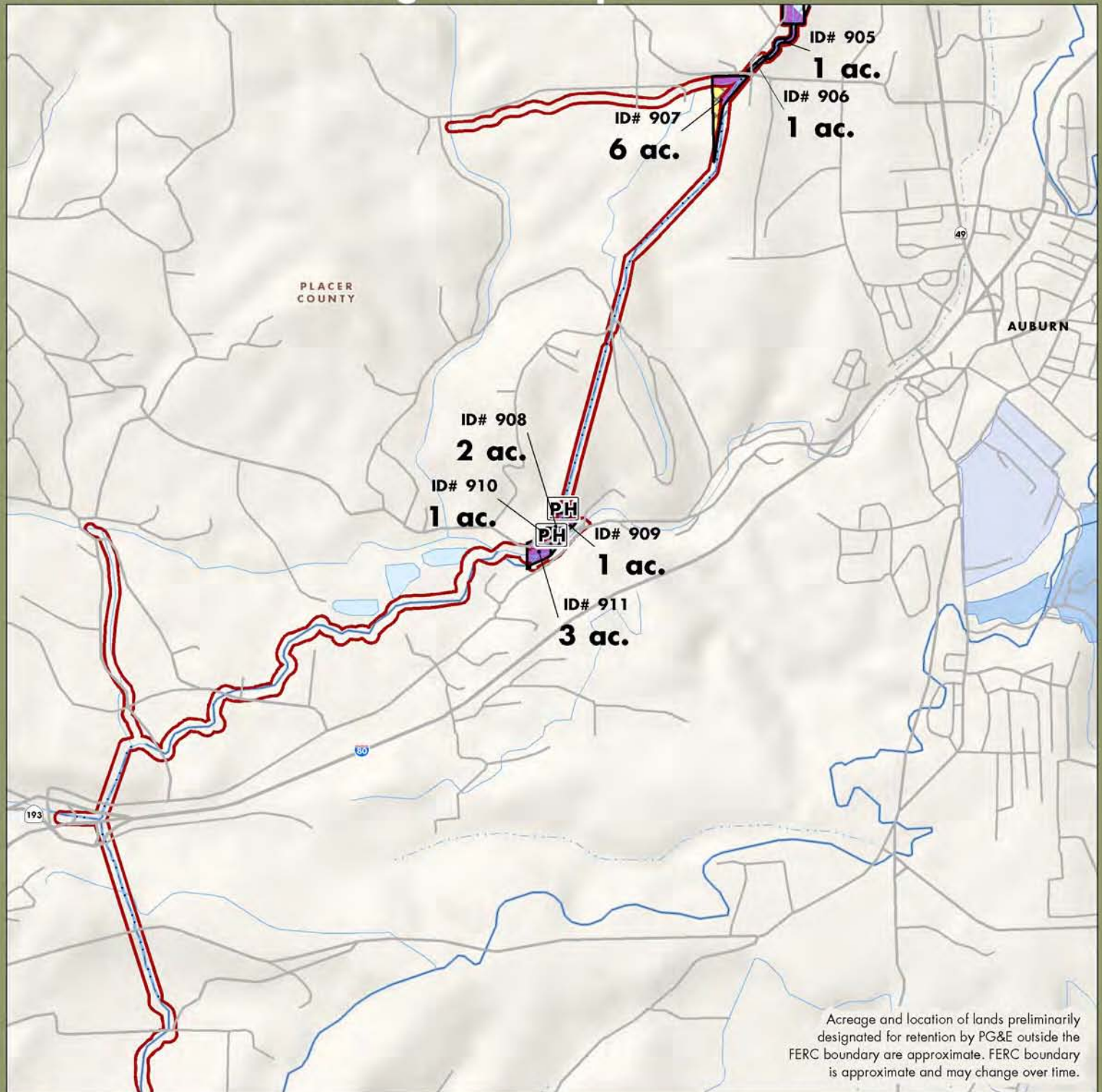
0 0.25 0.5 0.75 Miles

April 2011  
**AECOM**



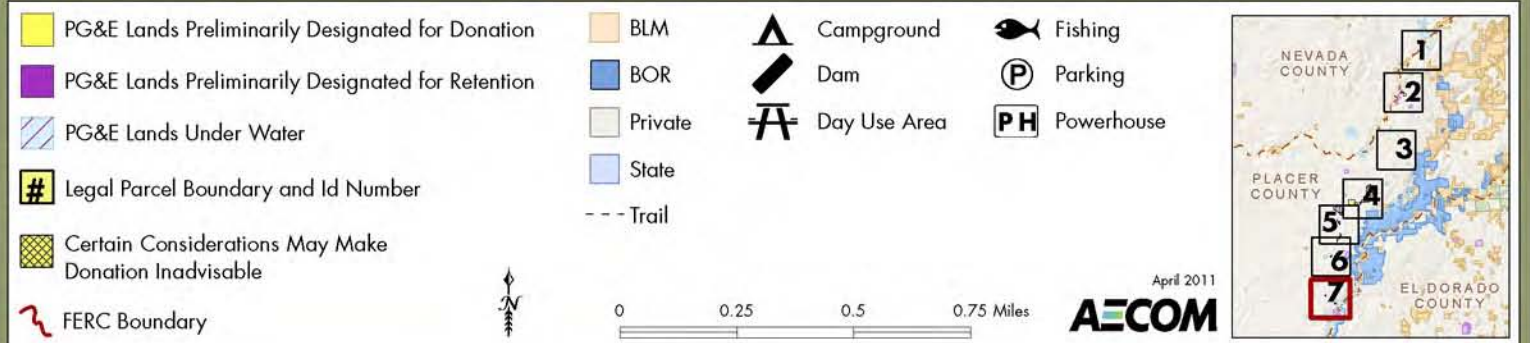
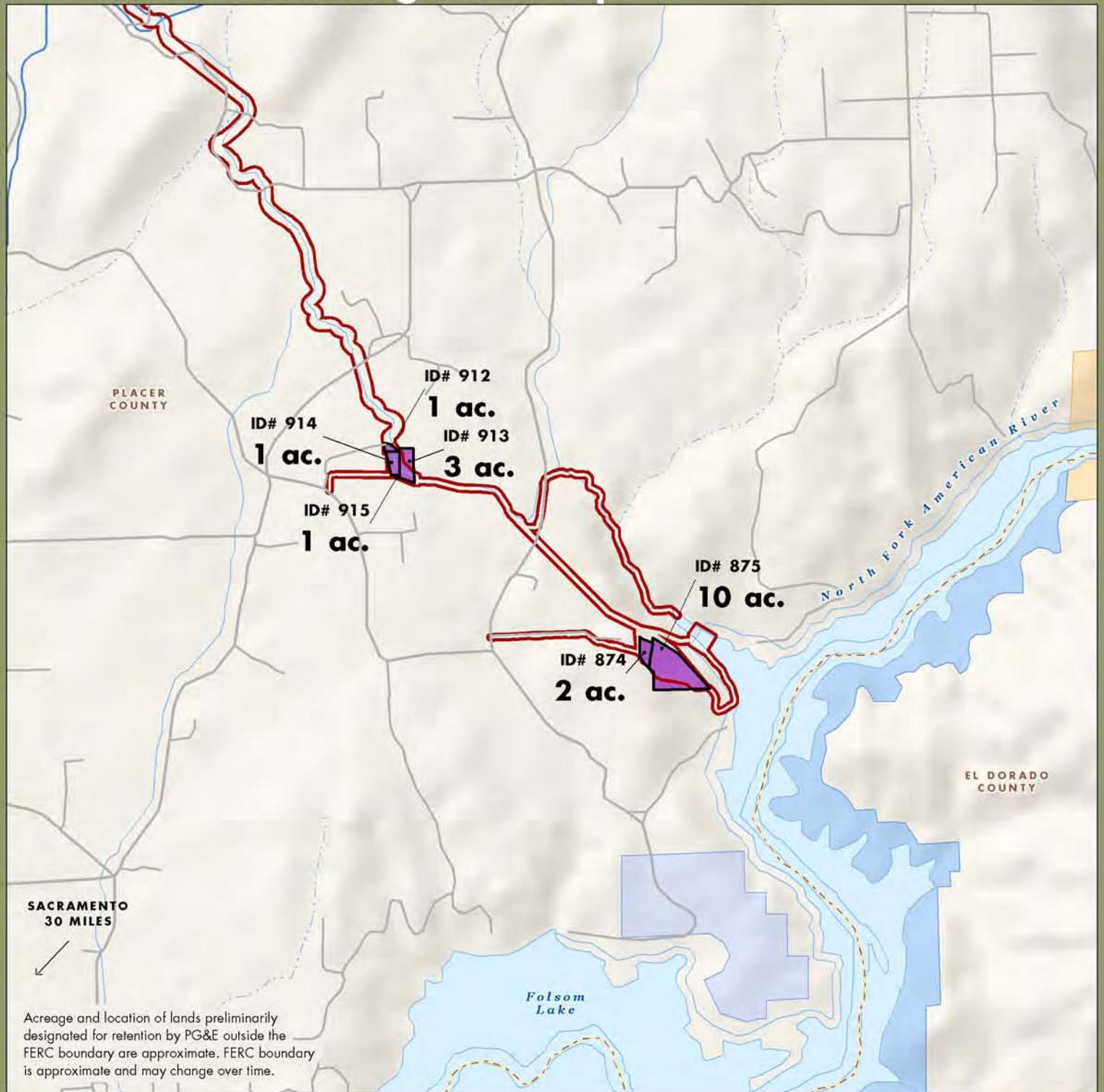


# Lower Drum Planning Unit: Map 6





# Lower Drum Planning Unit: Map 7





# LOWER DRUM PLANNING UNIT

## Yuba-Bear River Watershed

### Existing Conditions & Uses

#### Overview

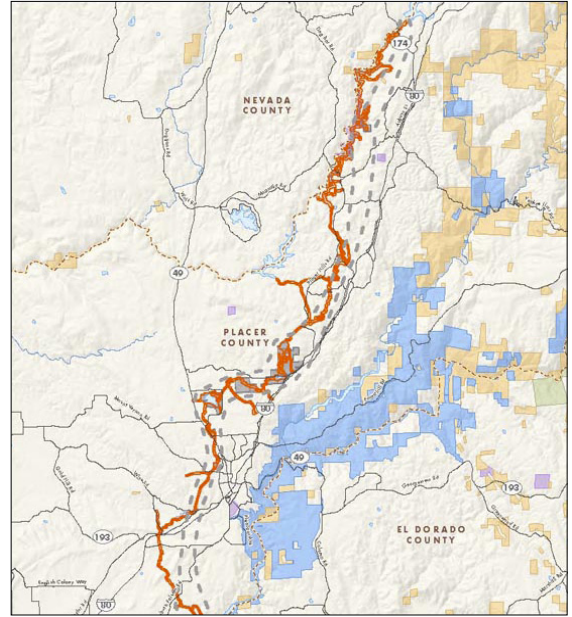
- Provides open space and recreation opportunities within the Sierra Nevada foothills
- 1,098 acres in Placer and Nevada Counties
- 789 acres outside the FERC boundary; 309 acres inside
- Part of the Drum-Spaulding Project (FERC #2310); License expires in 2013, relicensing expected to begin in 2007

As shown in Figure YB-9, the Lower Drum Planning Unit lies in close proximity to the City of Auburn, providing both recreation and open space opportunities in the Sierra Nevada foothills. The planning unit straddles an elevation range of 700 to 2,000 feet in this foothill region composed of small reservoirs, oak and pine woodlands, wetlands, and grasslands. The lands are located predominantly in Placer County with one small parcel found in Nevada County along Interstate 80. The planning unit is adjacent to a mixture of private, BLM, DFG, Bureau of Reclamation, and Placer County lands.

Several hydropower facilities and associated infrastructure are located in the Lower Drum



Wetland habitat by Rock Creek Reservoir



Lower Drum Planning Unit  
Nevada & Placer Counties

Planning Unit. PG&E operates four powerhouses within this planning unit, and the Nevada Irrigation District owns and operates the Rollins Powerhouse.

#### Fish, Plant, and Wildlife Habitat

The Lower Drum Planning Unit offers a diversity of habitat for flora and fauna. The planning unit provides aquatic and emergent wetland habitat within its reservoirs, riparian habitat along the Bear River, and oak and pine woodlands and grassland within the upland areas. The planning unit provides suitable habitat for a variety of species, including many special status species such as California red-legged frog, foothill yellow-legged frog, northwestern pond turtle, oak titmouse, and numerous bat species. One special status species, the coast horned lizard, is likely to be found in the vicinity of the planning unit. Two special status plants, big-scale balsamroot and Brandegee's clarkia, have been documented within a one-mile buffer of the FERC boundary.

#### Open Space

Many of the parcels in this planning unit serve as open space buffers in areas of suburban





# Lower Drum Planning Unit Existing Conditions

- PG&E Lands Preliminarily Designated for Retention
  - PG&E Lands Preliminarily Designated for Disposition
  - BIA
  - BLM
  - BOR
  - DOD
  - NPS
  - Other/NGO
  - State
  - USFS
  - Federal Wilderness
  - Boat Launch
  - Campground
  - Dam
  - Day Use
  - Feature of Importance
  - Fishing
  - Fish Barrier Dam
  - Gate
  - Lodging
  - Non-Motorized Boating
  - Parking
  - Powerhouse
  - Private Camp
  - Ranch
  - Trailhead
  - Whitewater Put-In/Take-Out
  - FERC Boundary
  - Stream / River
  - Canal / Ditch
  - Pipeline
  - Highly Valued Stream
  - Primary Roads
  - Secondary Roads
  - OHV Roads
  - Trail
- All symbols may not appear on the map

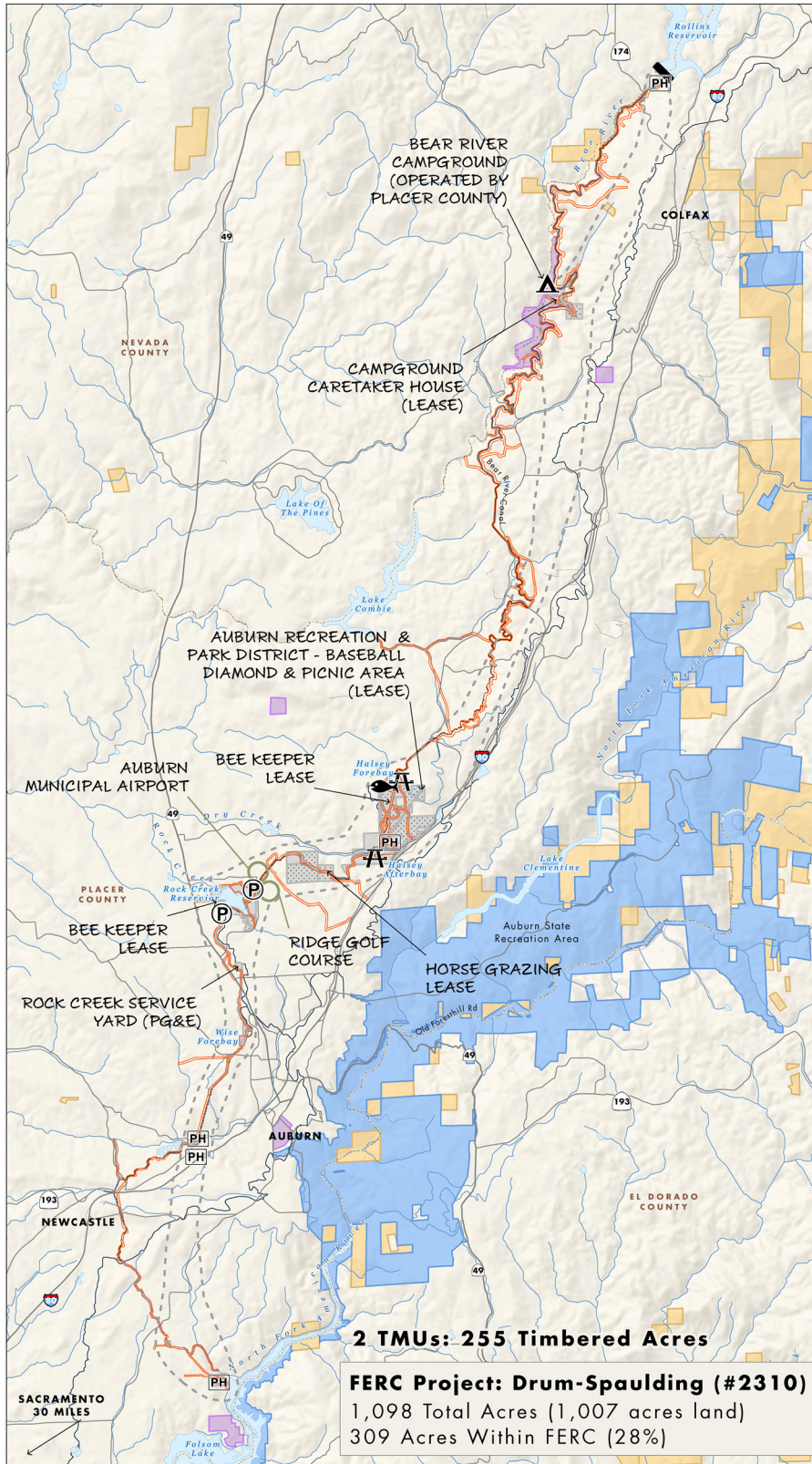


Figure YB-9



# LOWER DRUM PLANNING UNIT

## Yuba-Bear River Watershed

development. This is especially true for parcels near the City of Auburn which are surrounded by urban development such as the Auburn Municipal Airport, The Ridge Golf Course, light industry, and residential tracts.

### Outdoor Recreation

Fishing and hiking are the primary recreational activities within the Lower Drum Planning Unit. The majority of the recreation facilities in the planning unit are focused at Halsey Forebay. This forebay is stocked with fish by DFG, making it a popular fishing spot for the surrounding community. Facilities at the forebay include a parking area, picnic tables, and a restroom.

Recreation opportunities in a natural environment also exist at Rock Creek Reservoir. Located in the gently rolling hills outside the City of Auburn, this area offers a rare mixture of recreation and open space within a developed landscape. This reservoir is edged by a mile of shoreline and is surrounded by wetlands and oak and pine woodland. Currently, the reservoir has few recreation enhancements – a gravel parking area and a single gravel trail along the southern shore. The reservoir serves as the drinking water supply for the City of Auburn and Placer County so boating and swimming are prohibited.

Additional reservoirs within the planning unit include the Halsey Afterbay and Wise Forebay. Both are lightly used and contain few recreation enhancements. To the north, parcels are located within the Bear River riparian corridor, and include a lease for a campground caretaker residence and a trail system from the Bear River Campground. The Auburn Area Recreation and Park District holds a lease for a baseball field and picnic area near Halsey Afterbay.

### Forest Resources

Forest resources within the Lower Drum Planning Unit consist of 255 acres of low elevation pine and mixed hardwood forests within two Timber Management Units (TMUs). The TMUs are both

managed under a Salvage prescription, which allows emergency harvesting following an insect attack or a catastrophic event.

### Agricultural Uses

There are three agricultural leases in this planning unit. One is a 5-acre horse grazing operation, located near Dry Creek and the Rock Ridge Golf Course; the other two are beekeeping operations. The majority of parcels are non-contiguous in nature, surrounded by suburban development, and are not well suited to agricultural activities.

### Historic Resources

The Southern Maidu and Washoe once lived in the area around the Lower Drum Planning Unit; however, very little of this area has been inventoried for cultural resources. At this time four historic and/or prehistoric sites have been identified within the planning unit. The terrain lends itself to Native American and historic Euro-American settlement; potential existing for the presence of additional cultural resources within the planning unit.



Rock Creek Reservoir



# LOWER DRUM PLANNING UNIT

## Yuba-Bear River Watershed

### Stewardship Council Recommendations

The Stewardship Council recommends that the land and land uses in the Lower Drum Planning Unit be preserved and enhanced by focusing on the importance of recreation at the site to the local community, as well as the need to provide ongoing protection to natural and cultural resources in the planning unit. In presenting the Recommended Concept provided here (see Figure YB-10), our objective is to preserve and enhance recreation and public access, and protect natural and cultural resources in this residentially developed area of the Sierra foothills.

**Objective: Preserve and enhance biological and cultural resources, and enhance public access, recreation opportunities, and sustainable forestry management.**

As shown in Table YB-5, the Stewardship Council has identified a number of preservation and/or enhancement measures that may contribute to the conservation management program for the Lower Drum Planning Unit. Additional detail and background regarding these potential measures can be found in the Supporting Analysis for Recommendations, provided under separate cover. These measures are intended to be illustrative in nature, not prescriptive and will be amended, deleted or augmented over time in coordination with future land owner and managers to best meet the objective for this planning unit.

#### Fish, Plant, and Wildlife Habitat

**Objective: Preserve and enhance habitat in order to protect special biological resources.**

The Lower Drum Planning Unit offers a diversity of terrestrial and aquatic habitats, which support many species, potentially

including several special status species. In order to preserve and enhance the habitat and resources found here, the Stewardship Council recommends that baseline studies and plans be developed to gain a clear understanding of the resources (particularly outside the relicensing study area where little information is currently available or will be provided by relicensing studies). These studies may be followed by specific management plans to ensure implementation of preservation and enhancement measures for specific resources if deemed necessary. Management of the property to preserve and enhance habitat will also include addressing noxious weeds and impacts of recreation on habitat values.

The Stewardship Council also recommends considering establishing a nature preserve at Rock Creek Reservoir. We recognize that the Lower Drum Planning Unit is an important resource in the regional setting and strongly encourage close coordination with local entities in implementing all biological resource protection measures and plans. The noxious weed management plan should be consistent with any future FERC license required plans as well as the fuels and forest management plans.

#### Open Space

**Objective: Preserve open space in order to protect natural and cultural resources and the recreation setting.**



Rock Creek Reservoir with wet meadows



# LOWER DRUM PLANNING UNIT

## Yuba-Bear River Watershed

This concept would preserve open space through permanent conservation easements. Conservation easements would describe all prohibited uses to maintain open space values, including the level of uses allowed and required to maintain open space qualities in this important area at the urban interface.

### Outdoor Recreation

**Objective: Enhance recreational facilities in order to provide additional public access, education, and recreation opportunities.**

The Lower Drum Planning Unit is an important recreation resource for the residents of the larger Auburn area. The Stewardship Council looks to enhance recreation opportunities by recommending day use facilities and public access enhancements. The Stewardship Council recommends enhancements focused on potential new day use areas in three locations, interpretive signage to promote natural and cultural resource awareness, and potential trail connections. The Stewardship Council also recommends developing a recreation management plan for lands outside the FERC boundary, exploring potential public access sites at Rock Creek Reservoir, and enhancing public safety at the reservoir around canals and flumes. We recommend these enhancements be considered in close cooperation with PG&E as well as upcoming FERC relicensing efforts and related recreation planning.

### Sustainable Forestry

**Objective: Develop and implement forestry practices in order to contribute to a sustainable forest, preserve and enhance habitat, as well as to ensure appropriate fuel load and fire management.**



Geese on Rock Creek Reservoir

The Lower Drum Planning Unit contains 255 timbered acres near the City of Auburn and other developments. The Stewardship Council recommends that future care and management of the Lower Drum Planning Unit include developing a long-term vision for forest management in the area, addressing silvicultural practices, holistic watershed management, fuels management, and fire management and response. The fire management and response, fuels and forest management plans should be consistent with future FERC license required plans, as well as the noxious weed management plan. We expect that all of these plans would be developed in coordination with adjacent landowner management and practices as appropriate.



Catching trout at Halsey Forebay



# LOWER DRUM PLANNING UNIT

## Yuba-Bear River Watershed

### Agricultural Uses

**Objective: Preserve and enhance grazing in order to support associated economic benefits, as well as to protect open space and habitat resources.**

Currently, there are two beekeeping leases and one horse grazing lease within the planning unit. The Stewardship Council looks to preserve these uses as part of the long-term management of the Lower Drum Planning Unit. To support this effort, we anticipate a baseline conditions report will be required to describe current agricultural uses, physical, and overall biological conditions of the area, as well as the potential demand and feasibility of enhancing both beekeeping and horse grazing. From this type of assessment, specific determinations can be made to identify and manage these uses in balance with other uses and values of the property.

understanding of these resources and ensure they are appropriately protected. To meet this objective, we recommend that cultural resource studies be conducted to understand the resources found in the Lower Drum Planning Unit (particularly outside the relicensing study area where less information is available or will be provided by relicensing studies), that appropriate management plans be developed and implemented, and that opportunities to support public education regarding cultural resources be considered. Throughout all of these efforts, the Stewardship Council recommends close coordination with Native American entities, as well as PG&E and upcoming FERC relicensing efforts.

### Preservation of Historic Values

**Objective: Identify and manage cultural resources in order to ensure their protection, as well as to support opportunities for public education.**

A few cultural resources are known to be present in the planning unit, and there is a high likelihood additional cultural resources are present. The Stewardship Council aims to support increased



Grasslands & wetlands at Rock Creek Reservoir





# **Lower Drum Planning Unit**

## **Organizations That Submitted a Statement of Qualifications for Fee-Title Interests**

Auburn Area Recreation and Park District  
Bureau of Land Management  
Cherokees of California  
Nevada County Land Trust  
Placer County  
Placer County Water Agency  
Placer Land Trust  
San Joaquin County Office of Education



## SUMMARY OF KEY PUBLIC OUTREACH ACTIVITIES AND PUBLIC COMMENTS ASSOCIATED WITH THE LOWER DRUM PLANNING UNIT

### PUBLIC REVIEW OF VOLUMES I AND II OF THE LCP

The Draft Land Conservation Plan (LCP) Volumes I and II were released in June 2007 for a 60-day public comment period. During this time, the Stewardship Council held ten public meetings to publicize the availability of the Draft LCP and to encourage public comment. During public review of Volumes I and II of the LCP, there were no comments received regarding the Lower Drum planning unit.

### PUBLIC INFORMATION MEETING FOR THE LOWER DRUM PLANNING UNIT

A public information meeting was hosted by the Stewardship Council on April 14, 2011 at the Auburn Parks and Recreation District Community Center in Auburn, California. The meeting concerned the following six planning units: Bear River, Chili Bar, Fordyce Lake, Lake Spaulding, Lower Drum, and Narrows. A total of 58 people attended and participated in the meeting, representing a wide variety of interests, including local and federal governments, community organizations, and community members. The meeting was advertised via an e-mail sent to contacts in our database, an announcement posted on the Stewardship Council's web site, a press release in the local newspaper, and a postcard sent to all landowners on record that reside within one mile of any PG&E parcel associated with the six planning units that were the focus of the meeting.

The purpose of this meeting was to: (1) provide a review and update on the Stewardship Council's Land Conservation Program; and, (2) solicit additional public input on future stewardship of the eight planning units. During the meeting, participants were invited to ask questions and provide comments on the eight planning units. Stations were set up with maps, other pertinent information, and easels with blank paper. Below is a summary of comments related to the Lower Drum planning unit that were recorded on the easels and provided on comment cards.

#### *Lower Drum Planning Unit*

- Enhance recreation in the Rock Creek Reservoir area for nearby residents
- Develop an equestrian trail on Parcel 876 from Halsey Afterbay to Halsey Forebay, Sugar Pine Mountain Trail, and Winchester Trail
- Develop a trail that would provide access to the entire planning unit
- Develop a baseball field northeast of Halsey Afterbay on Parcel 888
- Improve fishing access on Parcels 877 and 878 (the area between Rollins Reservoir and Hwy 174)
- Some areas are extremely overgrown and in need of fire prevention treatment
- Support for Placer County to acquire Parcel 871 in order to establish a riparian recreation area



- Support for the lands available for donation to be transferred to the Auburn Area Recreation and Park District

*General Comments Concerning the Yuba-Bear Watershed Area*

- Mineral resources should be included as a beneficial public value
- Lands available for donation should be transferred to an entity that will preserve and enhance public access
- Provide adequate time for the public to review and provide comments on the land stewardship proposals, proposed donee recommendations, and conservation easements
- Understand that all of the parcels have a history of land use and are no longer pristine
- Provide parcel-specific goals to promote public understanding and comment

#### ADDITIONAL COMMENTS RECEIVED

The Stewardship Council also received other public comments and letters from individuals and organizations regarding the future management of the Lower Drum planning unit, as summarized below:

- The protection of sensitive cultural resources should be prioritized
- Watershed health and water quality should be protected
- Secure funding for future enhancements
- Engage tribes in the management of the watershed lands
- Ensure Native American access to the watershed lands